



# CITY

60346



**WARNING: CHOKING HAZARD.** Toy contains small parts and a small ball. Not for children under 3 years.



## 乐高®拼搭指引



LEGO® Building Instructions

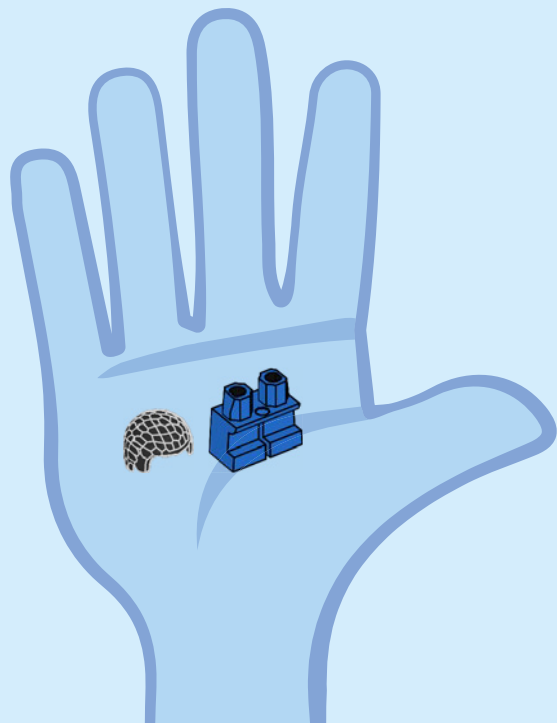
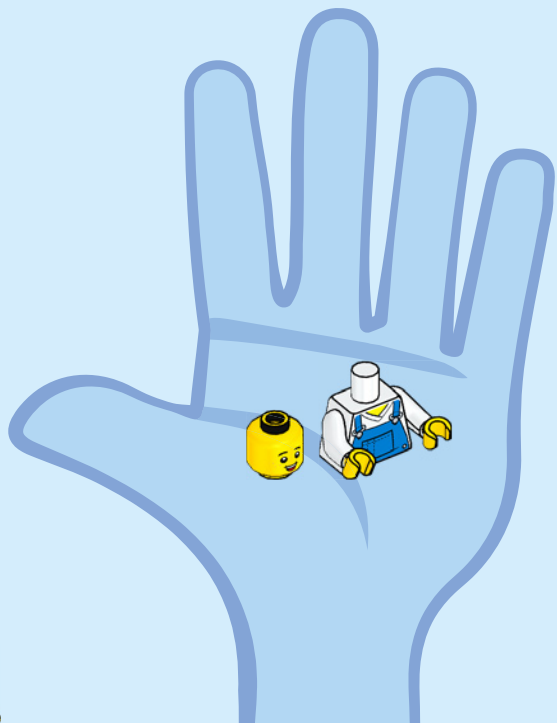


Apple and the Apple logo are trademarks of Apple Inc.  
 Google Play and the Google Play logo are trademarks of Google LLC.  
 Tencent and the Tencent logo are trademarks of Tencent Inc.

Check for compatibility  
 Kompatibilität prüfen  
 Vérifier la compatibilité  
 Controlla la compatibilità  
 Comprueba tu compatibilidad  
 Verificar a compatibilidade  
 Ellenőrizd a kompatibilitást  
 Pārbaudīt saderību  
 Verificarea compatibilității  
 检查兼容性

[LEGO.com/devicecheck](https://LEGO.com/devicecheck)







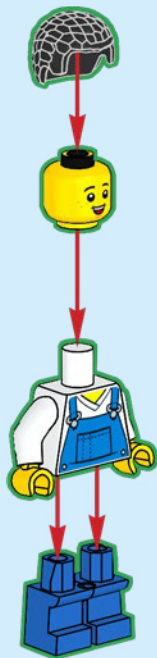
## AVERTISSEMENT : RISQUE D'ÉTOUFFEMENT.

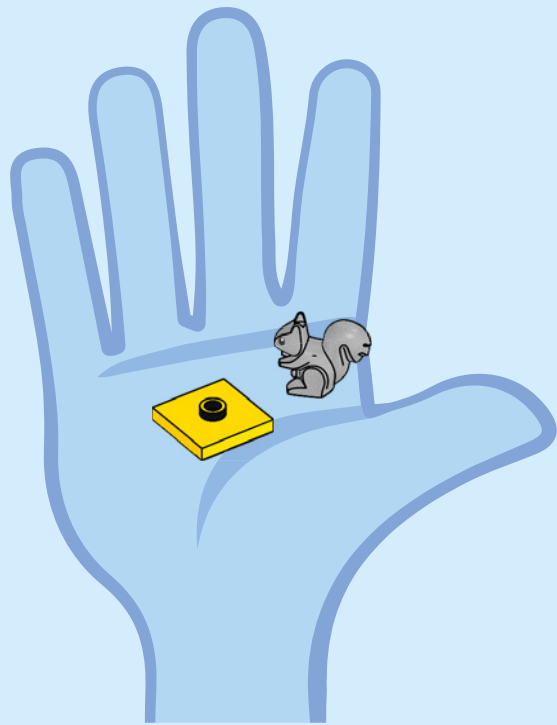
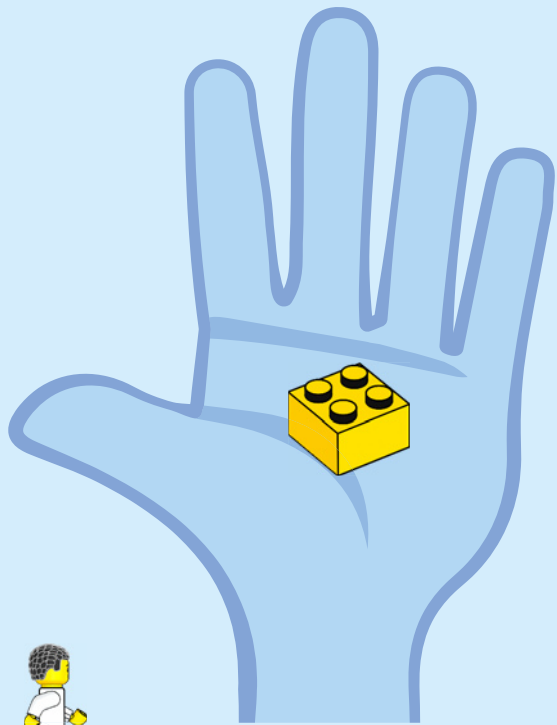
Le jouet contient des petites pièces ainsi qu'une petite boule.  
Il ne convient pas aux enfants de moins de 3 ans.

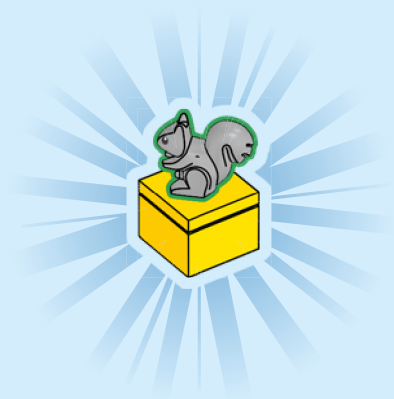
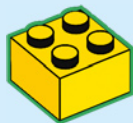


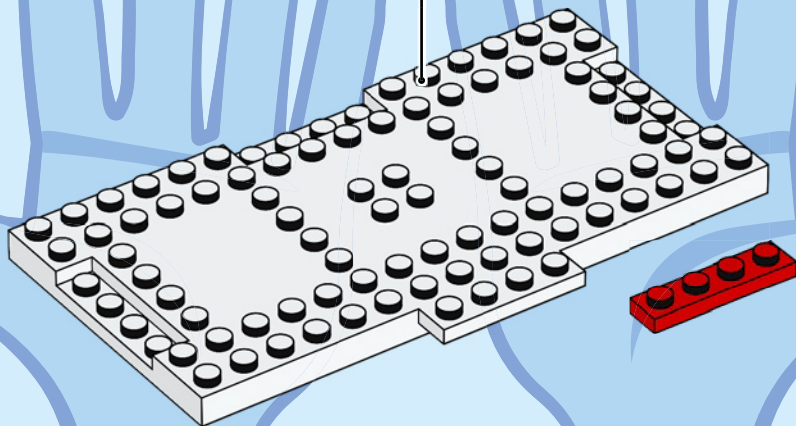
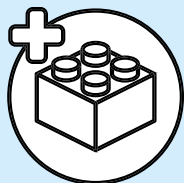
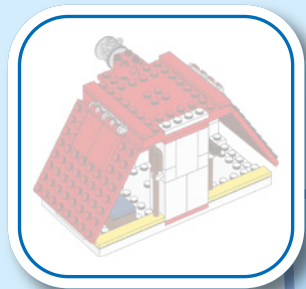
## ADVERTENCIA: PELIGRO DE ASFIXIA.

Juguete que contiene partes pequeñas y una pelota pequeña.  
No recomendado para niños menores de 3 años.

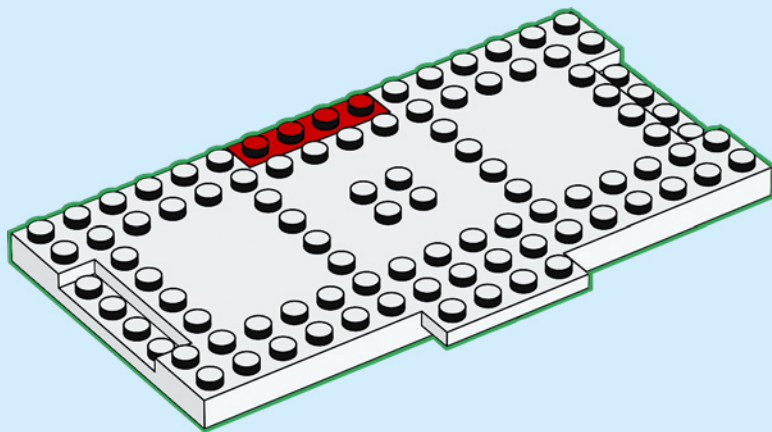


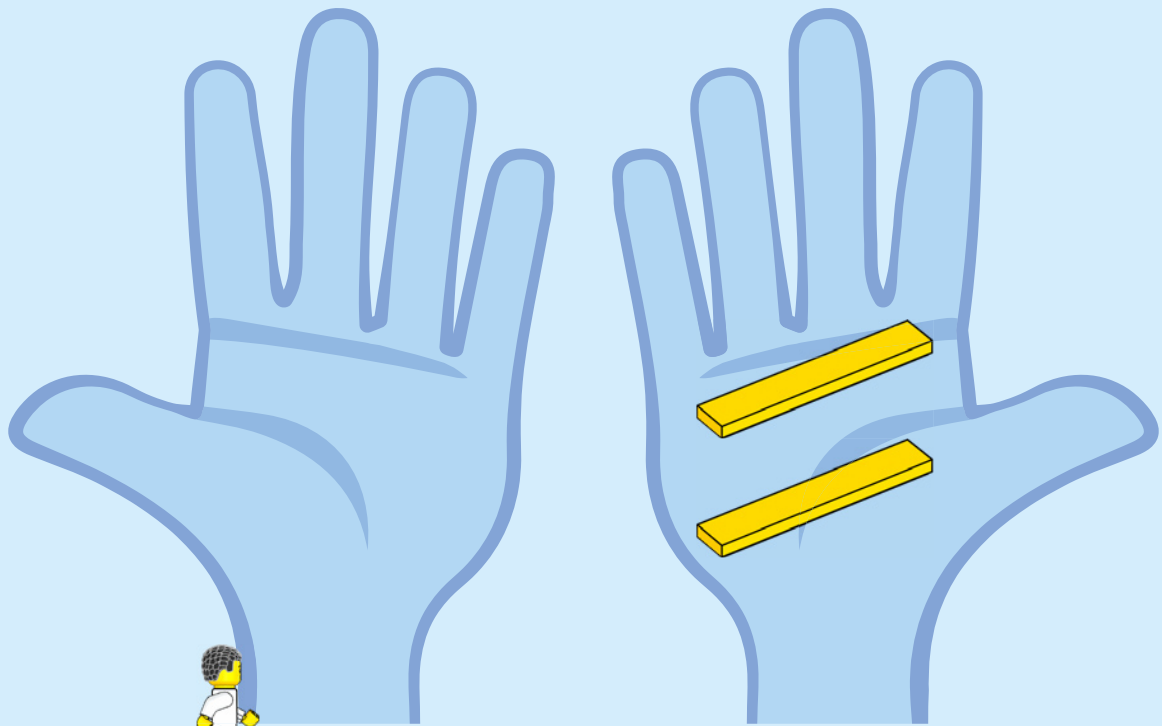


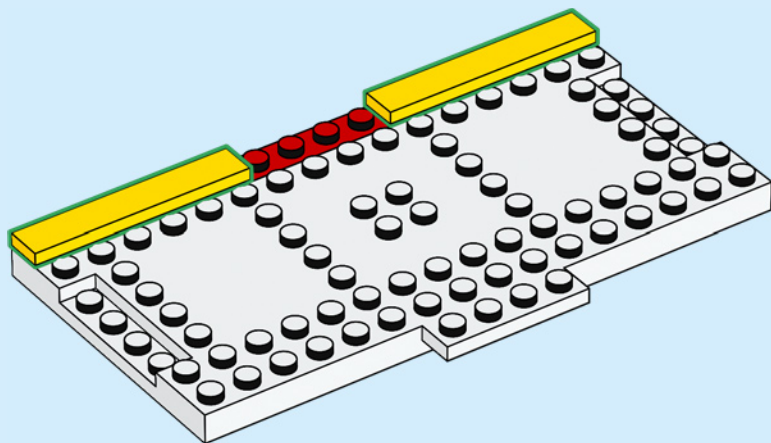


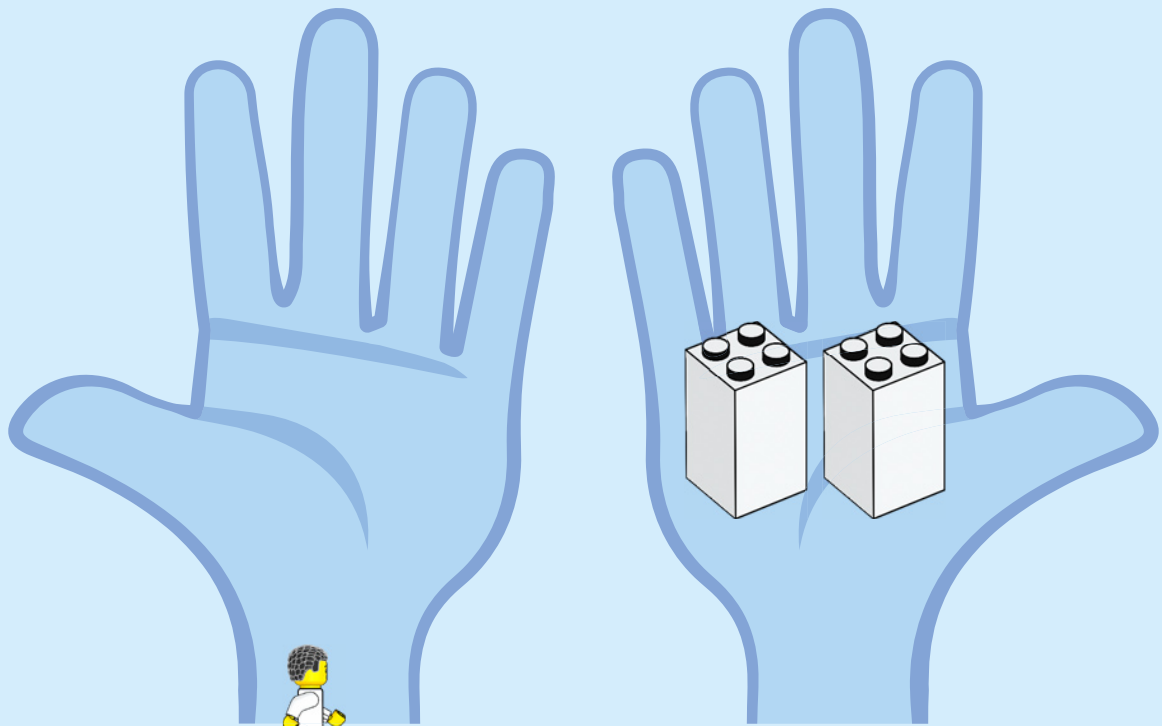


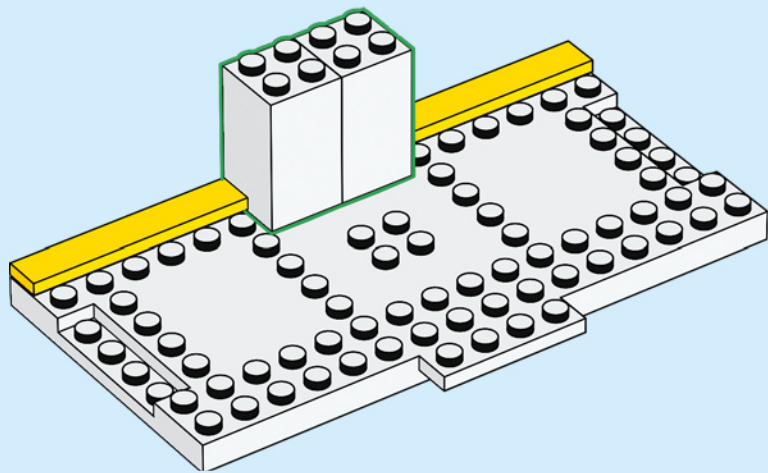


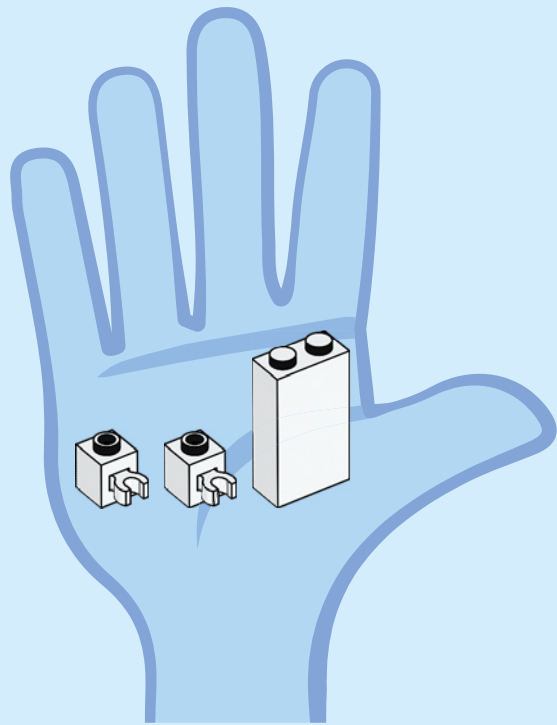


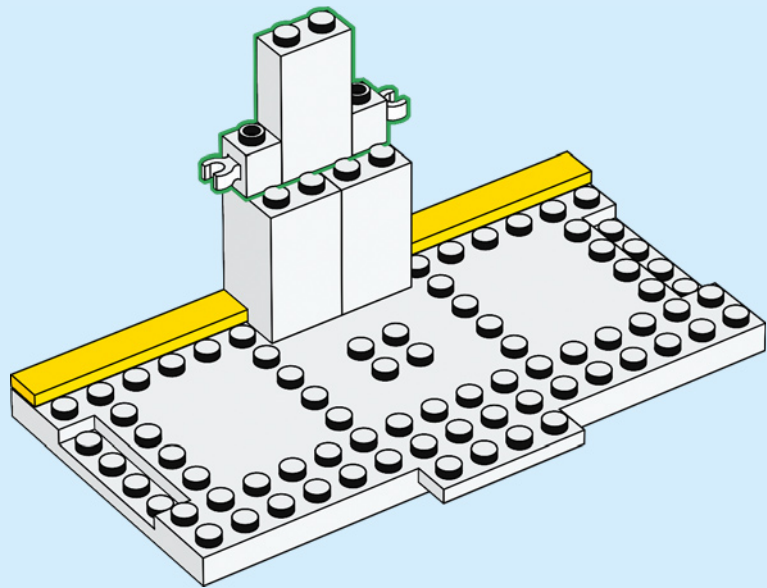


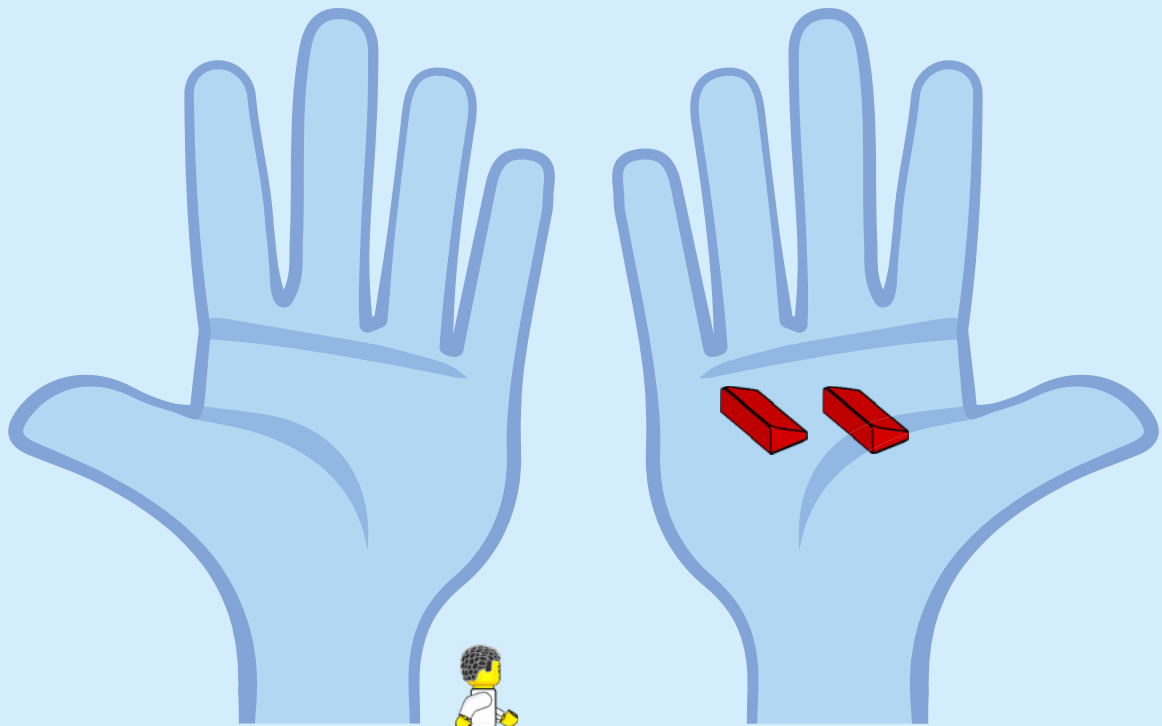




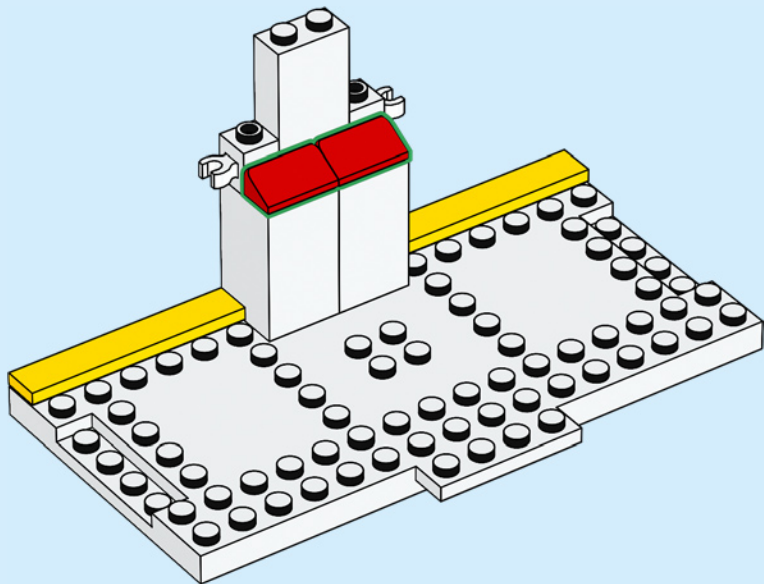


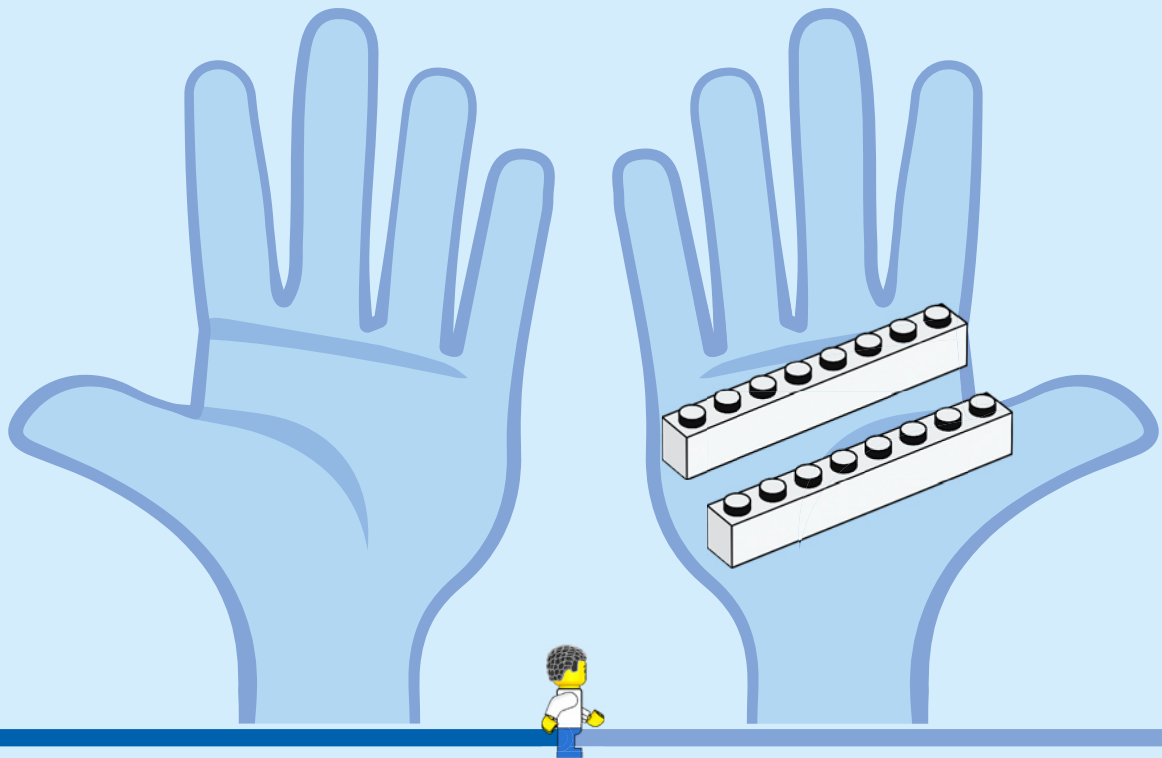




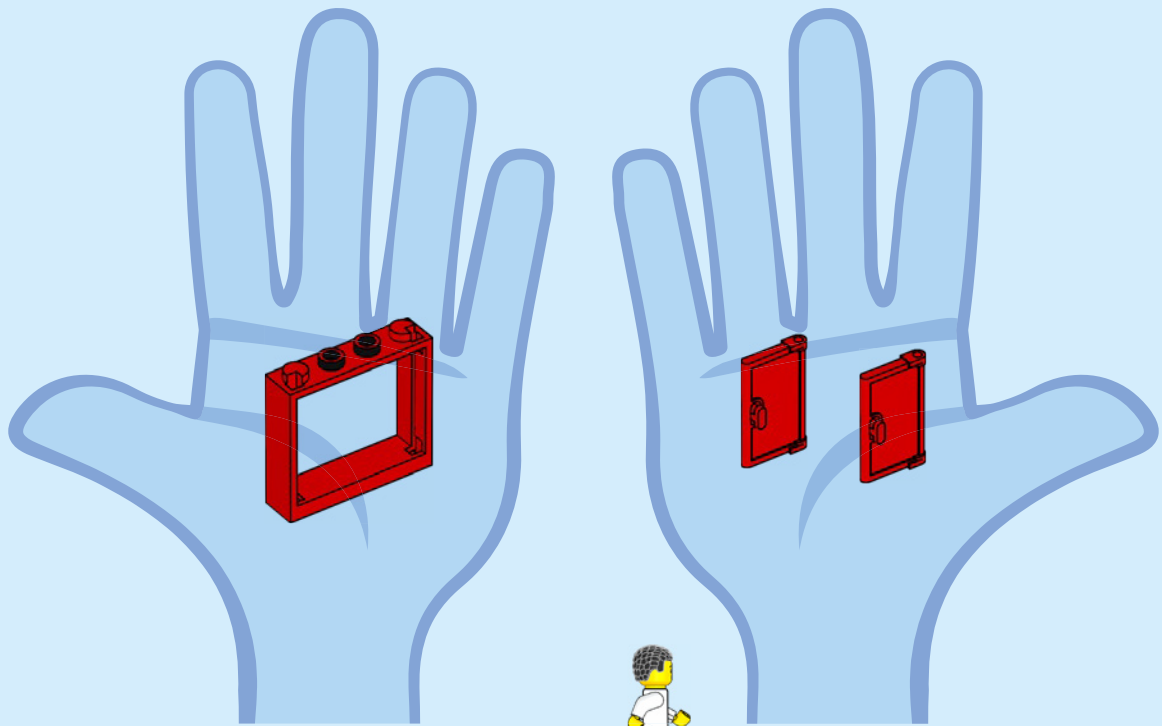


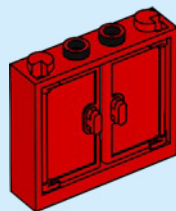
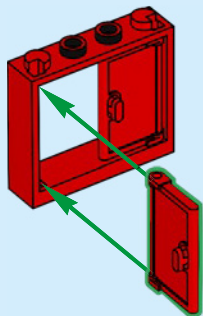
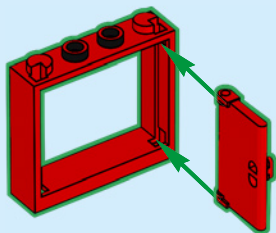


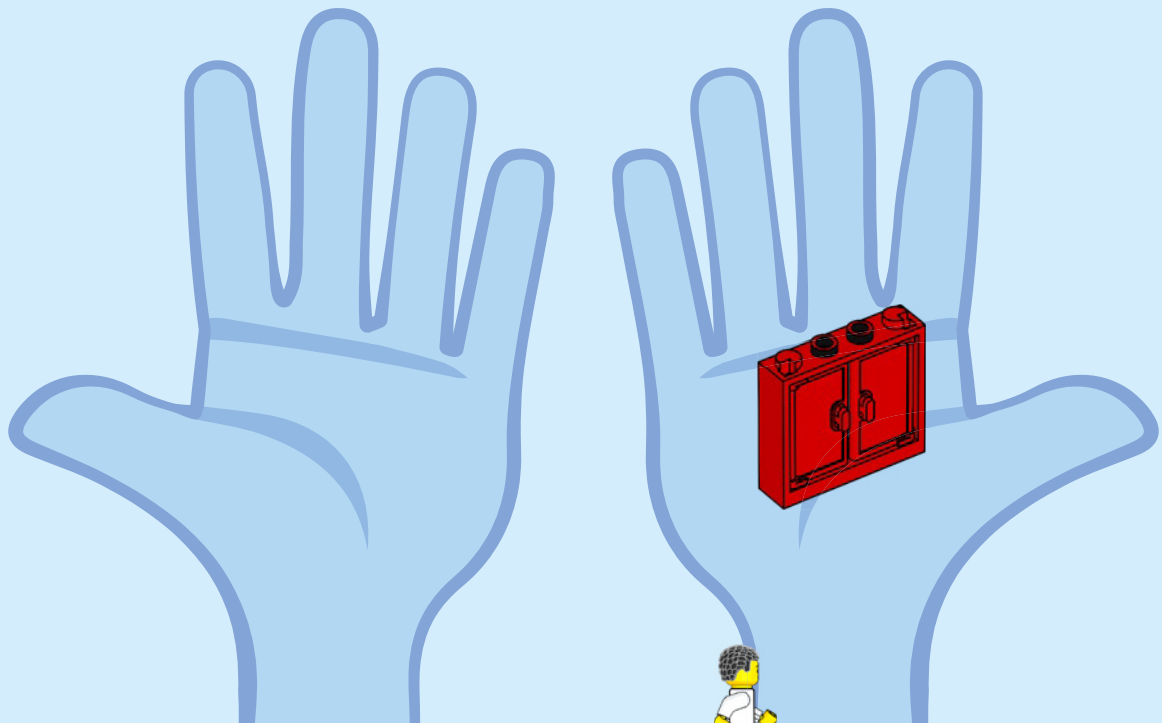


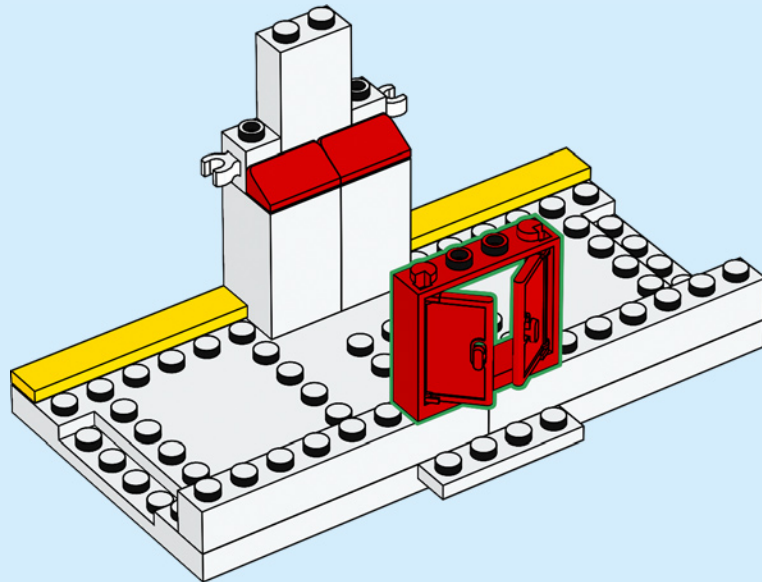


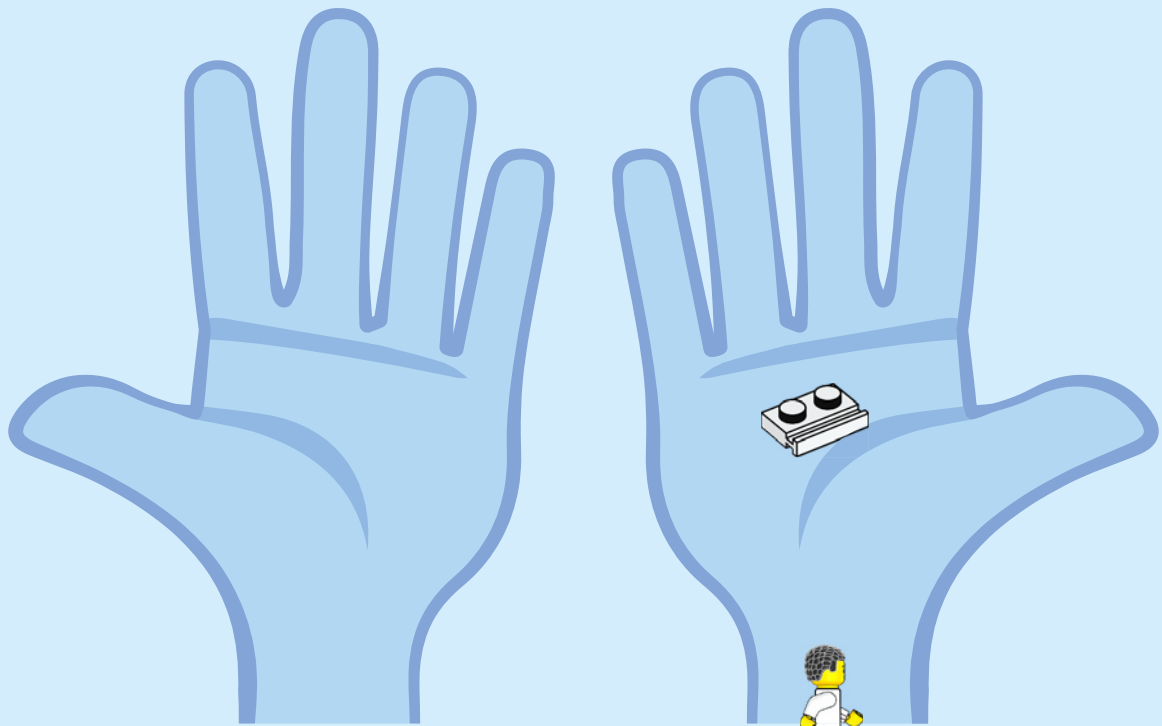






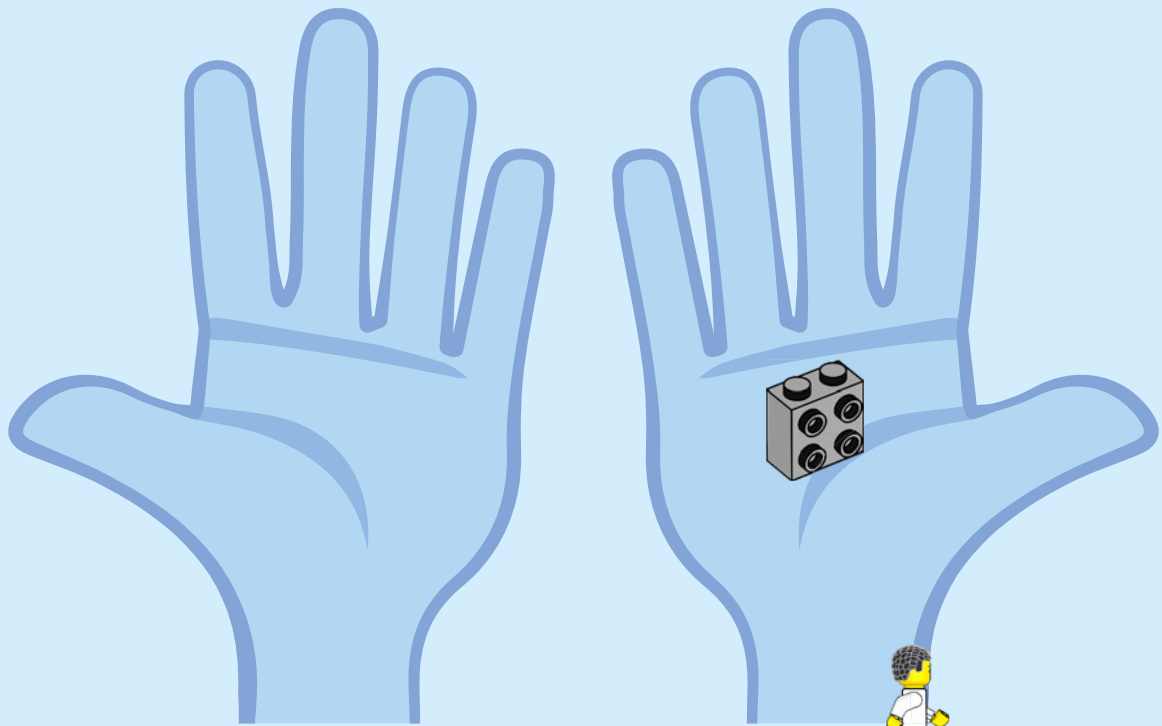


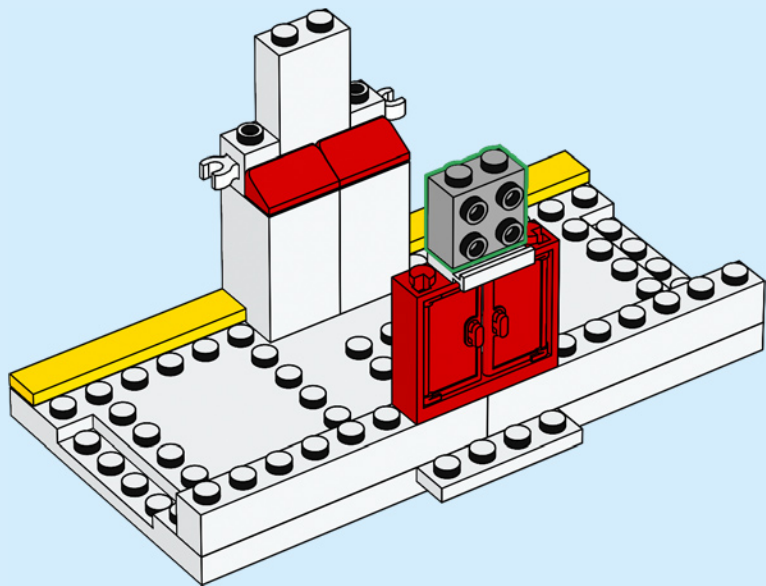


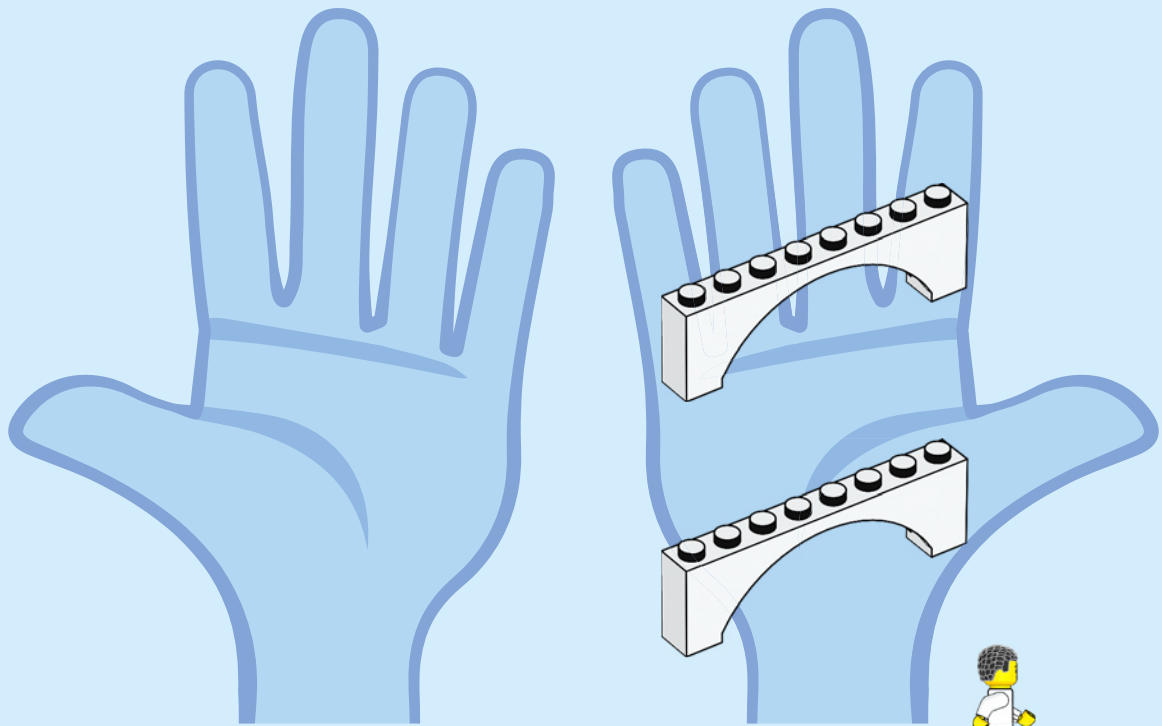




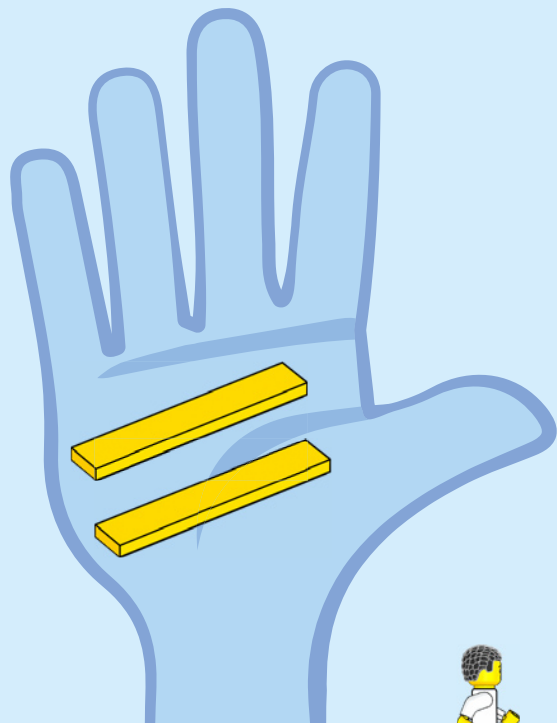
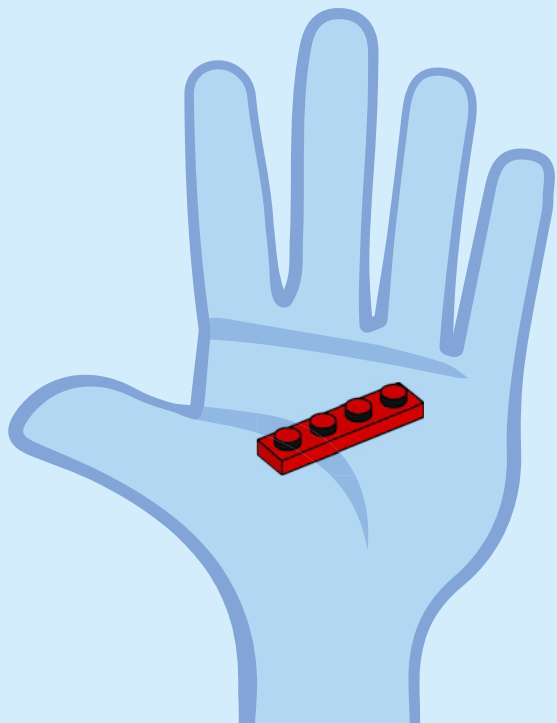




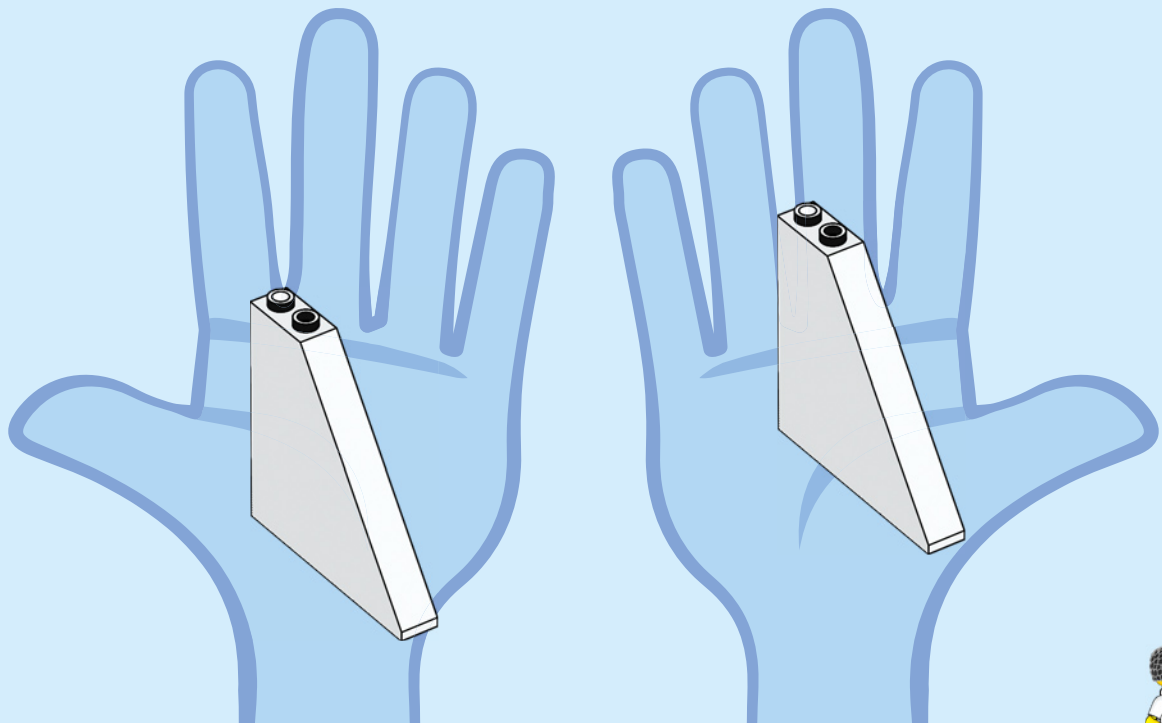






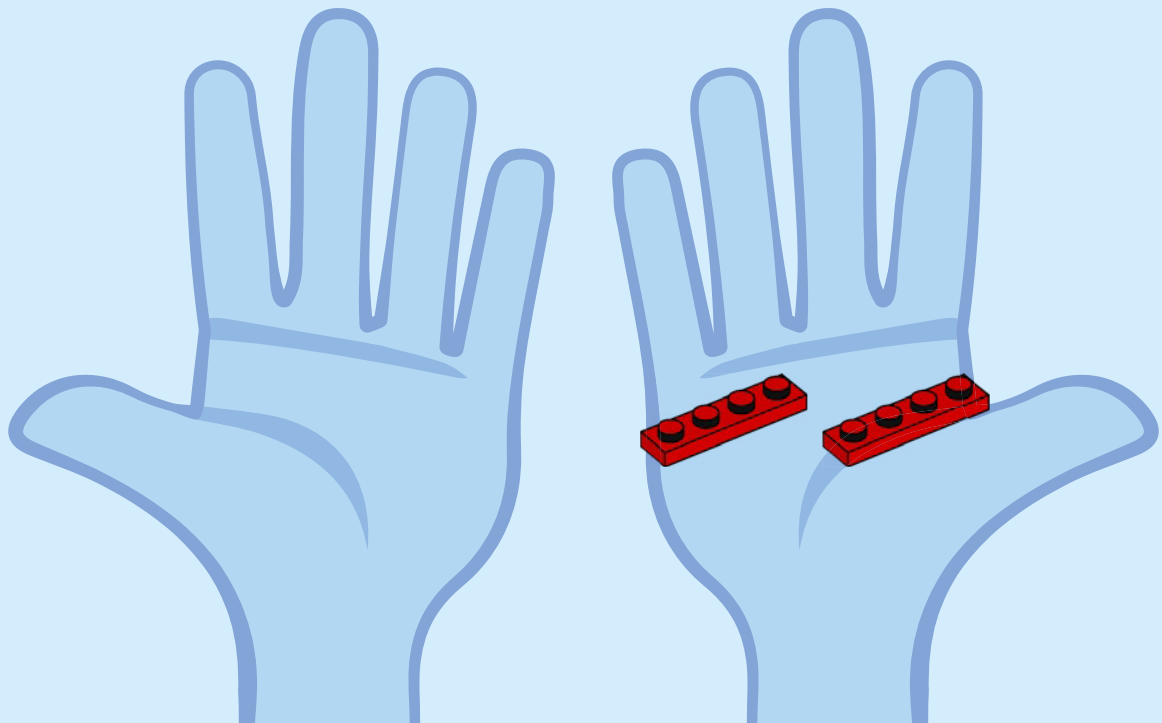




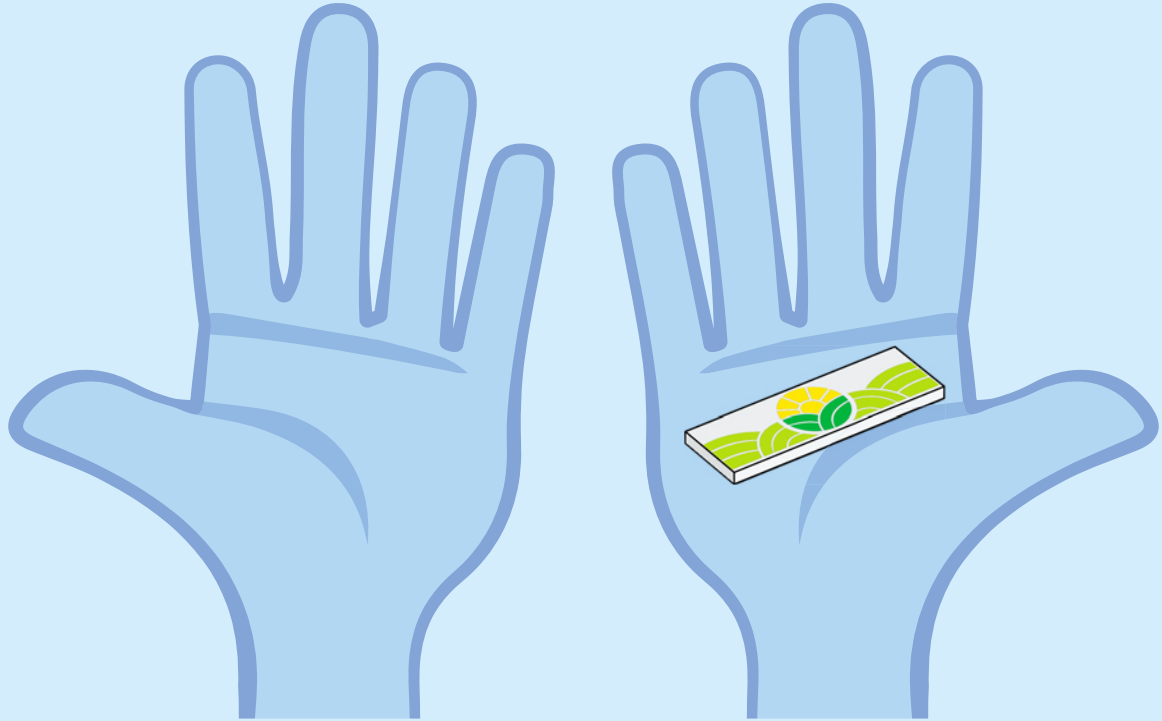




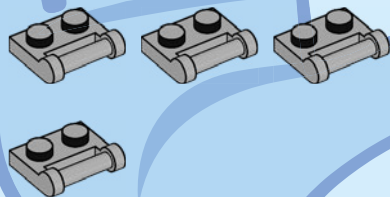
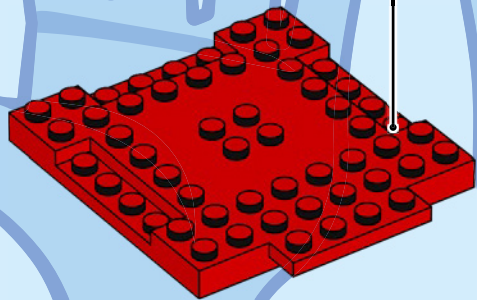
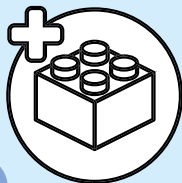
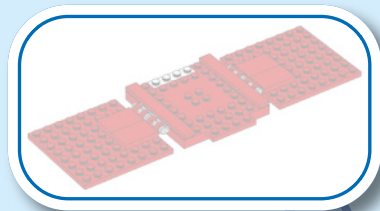


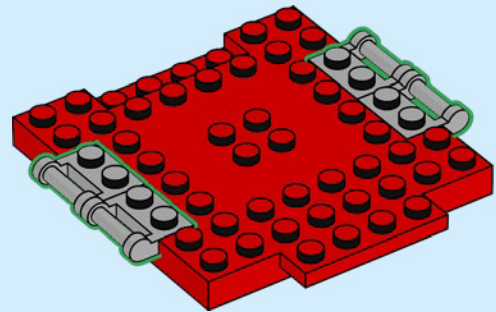
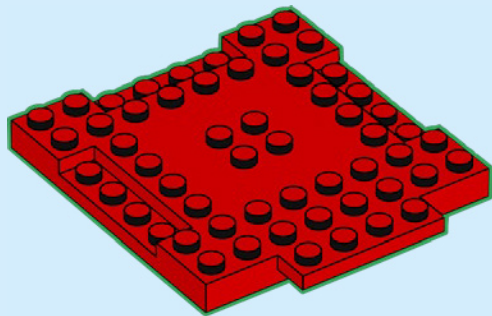


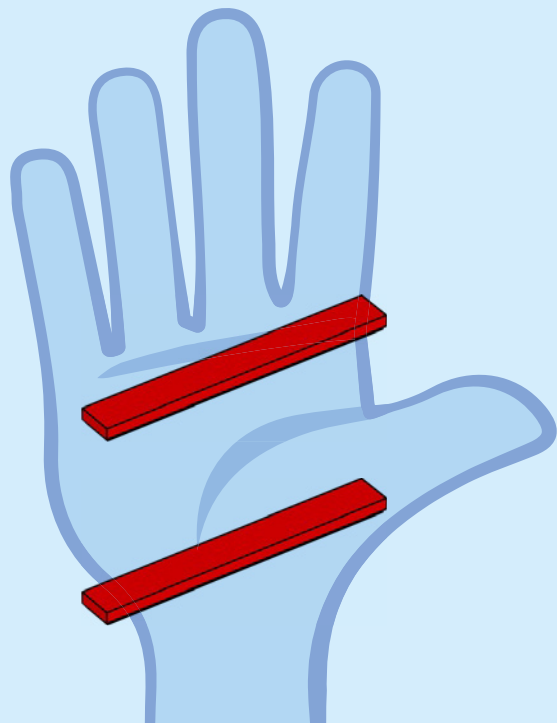
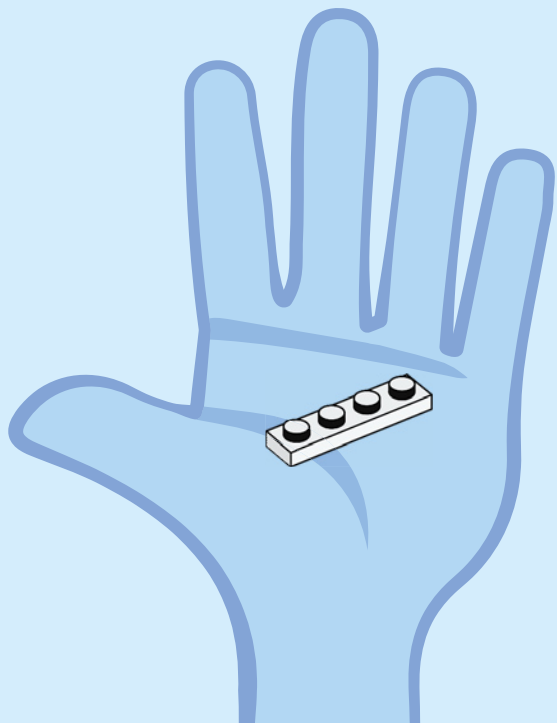




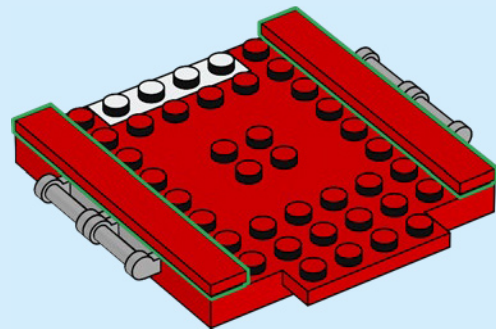
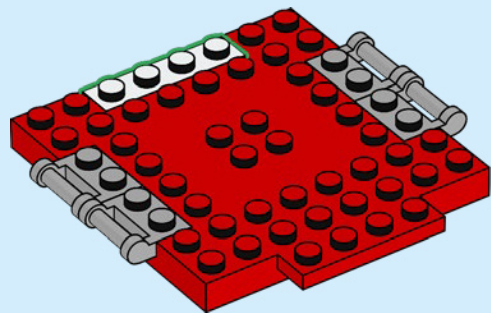


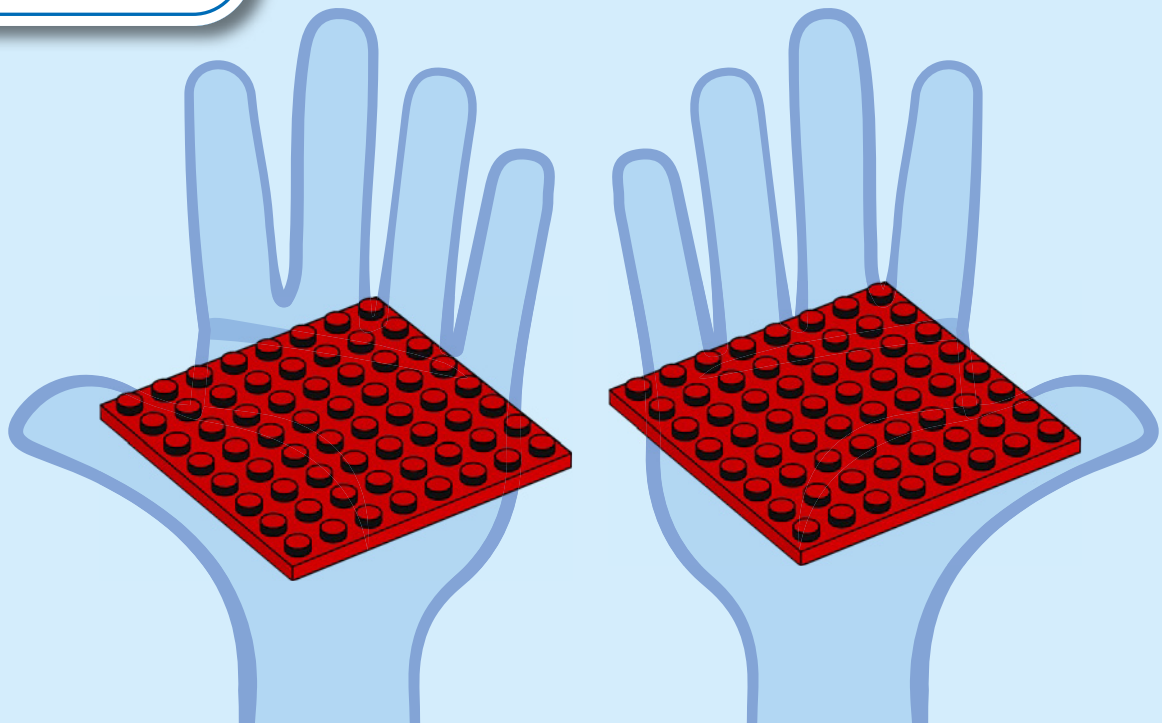
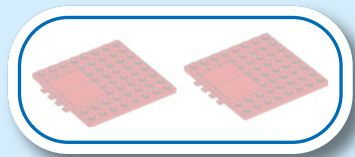


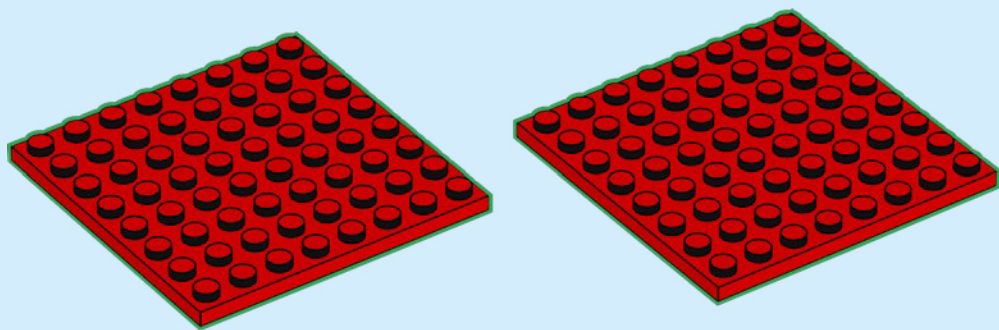


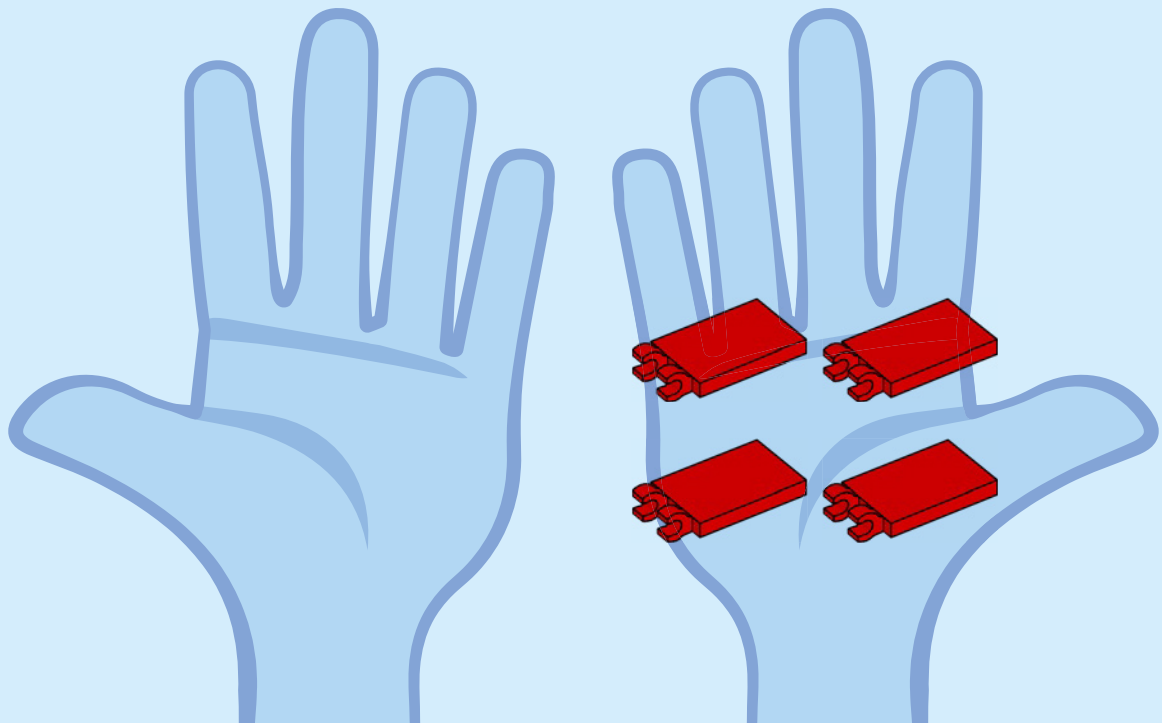


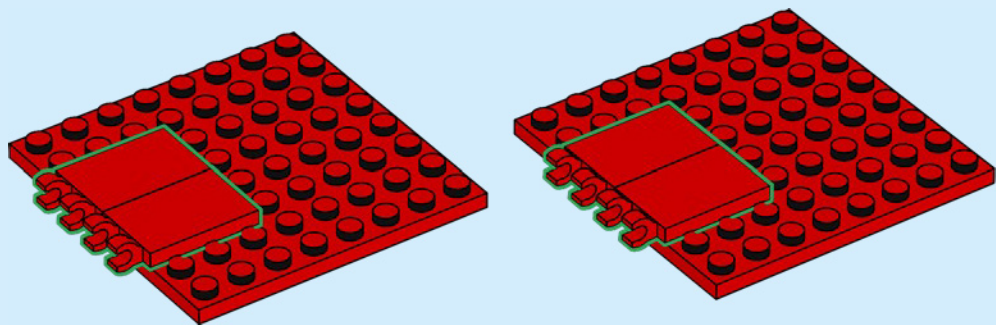


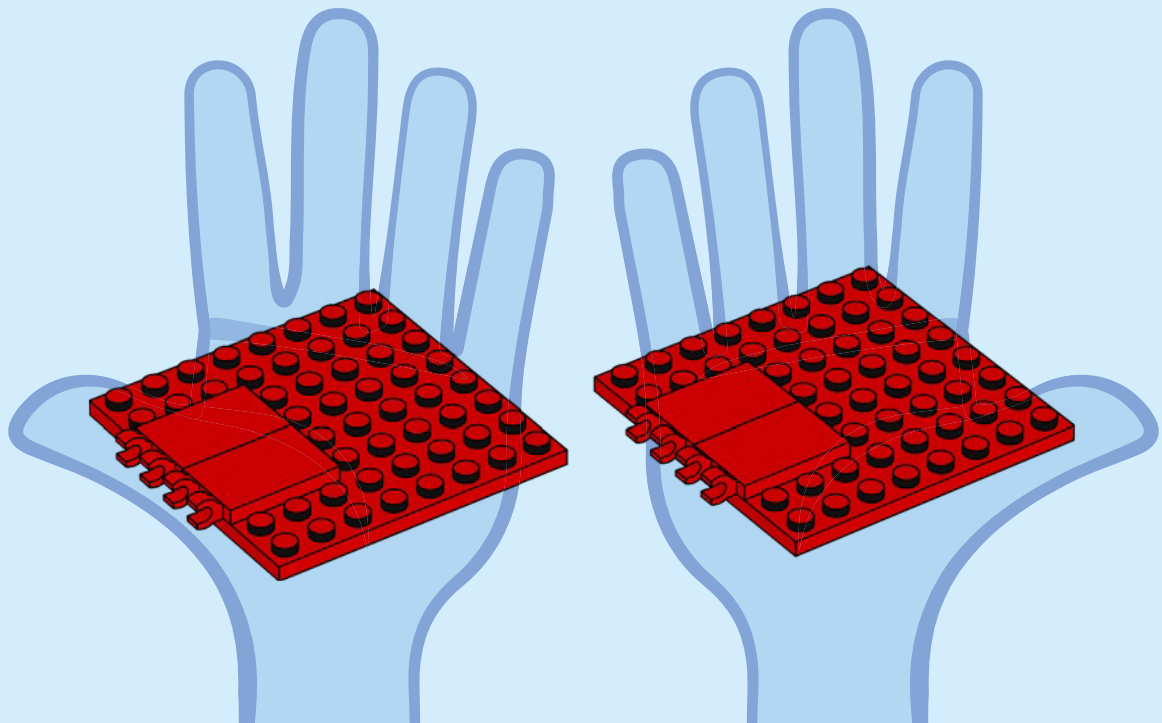


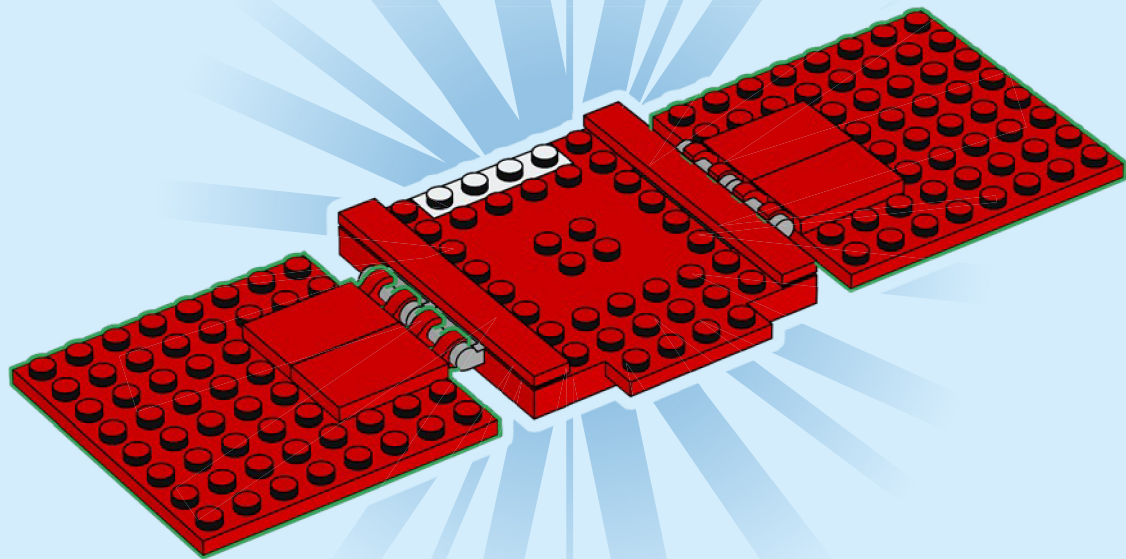


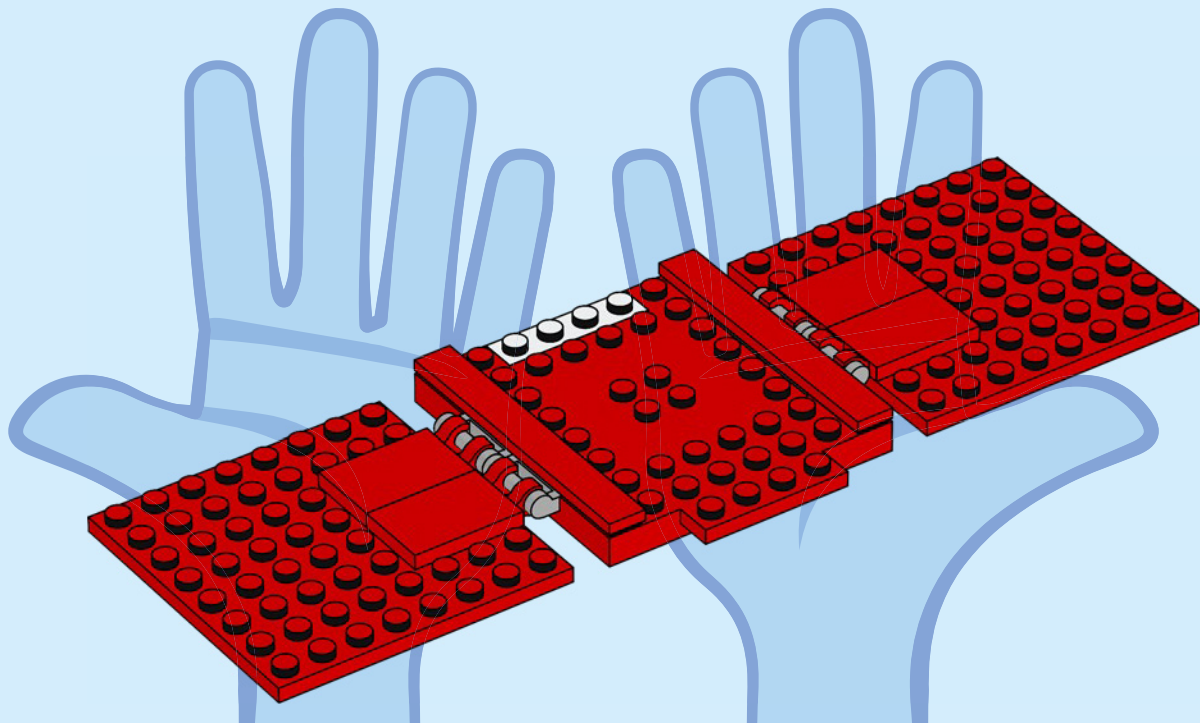




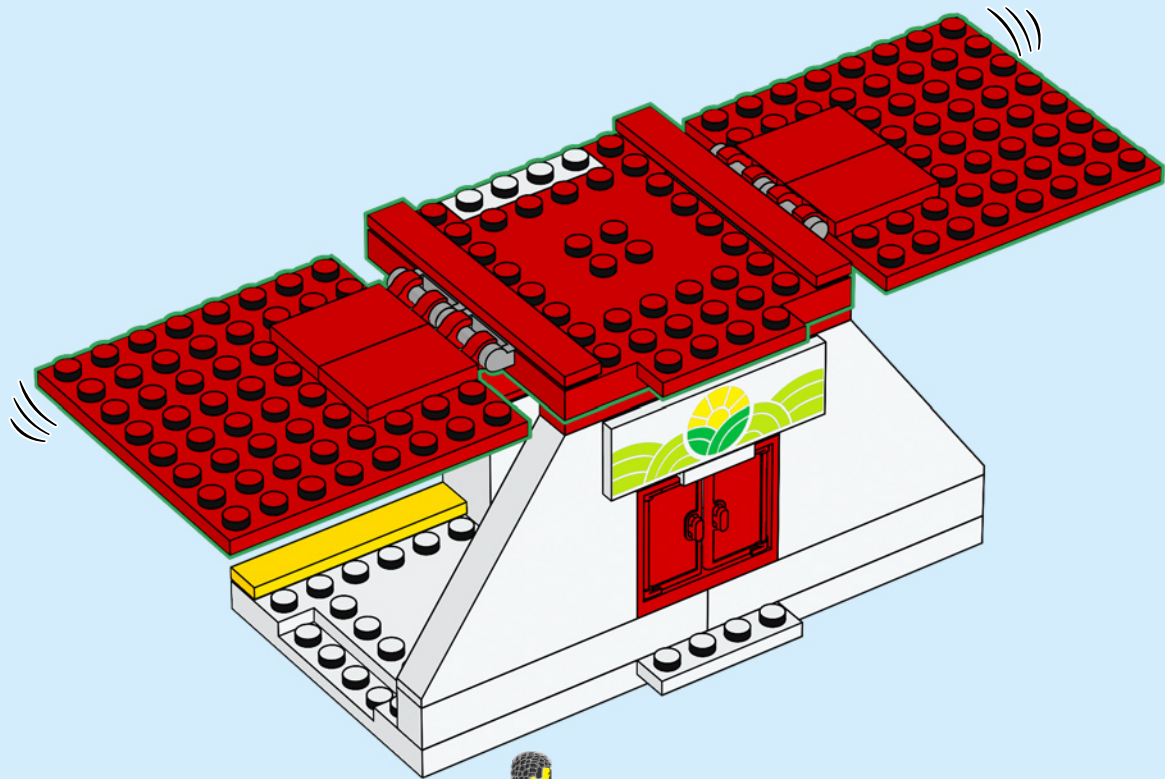


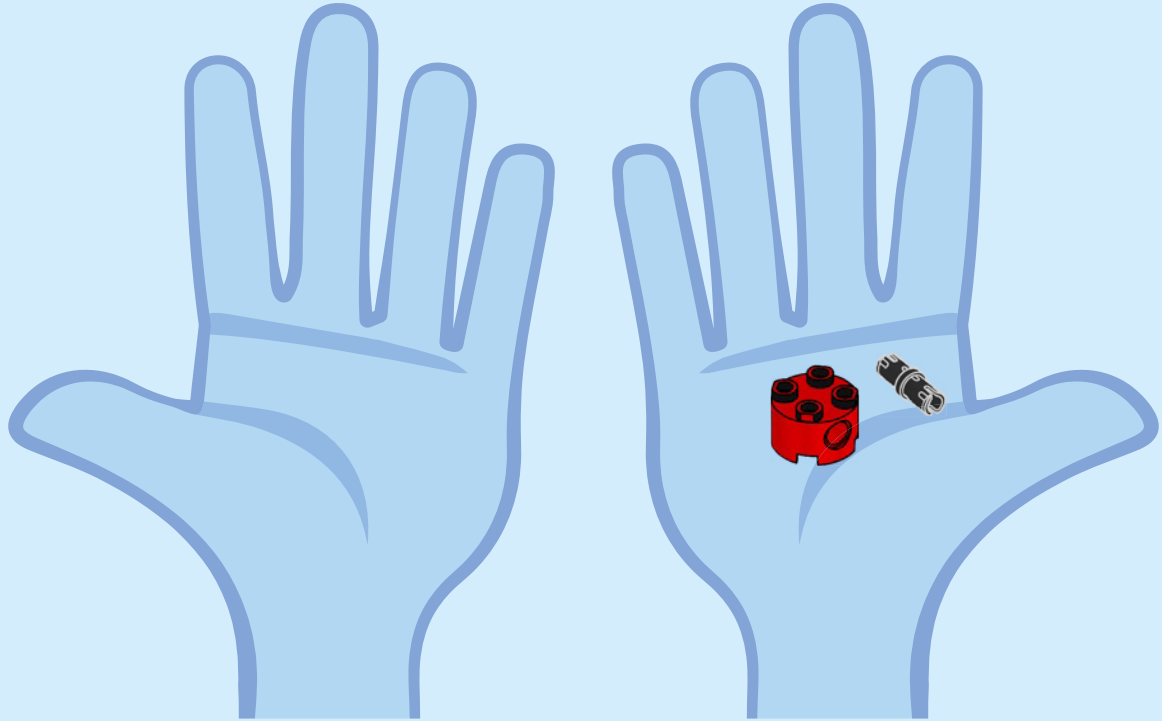


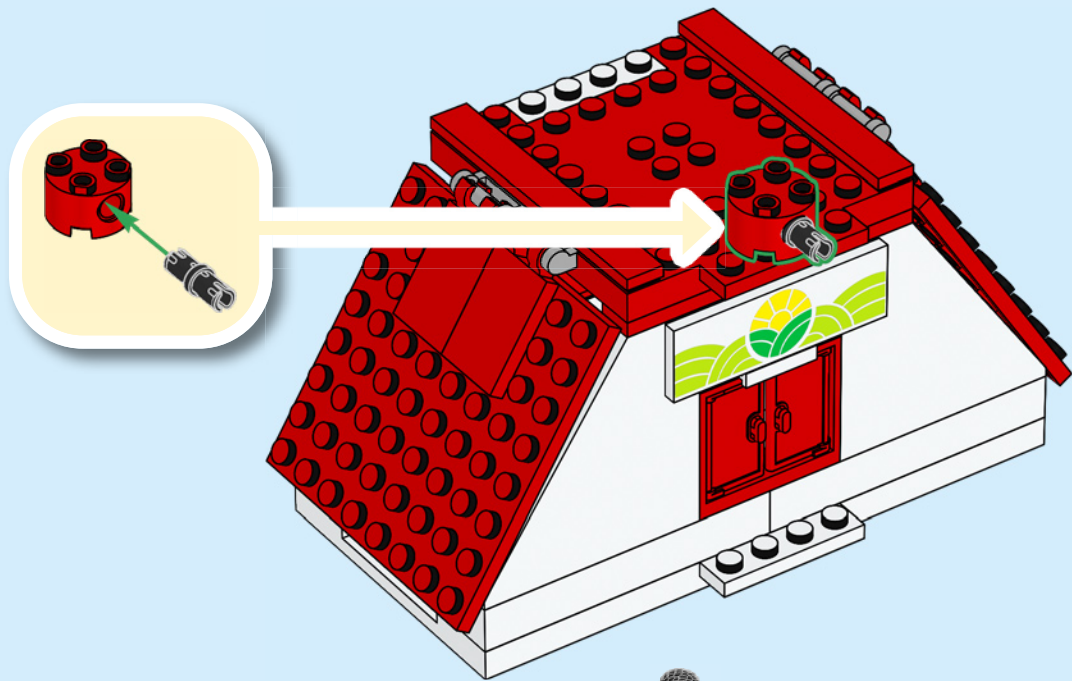


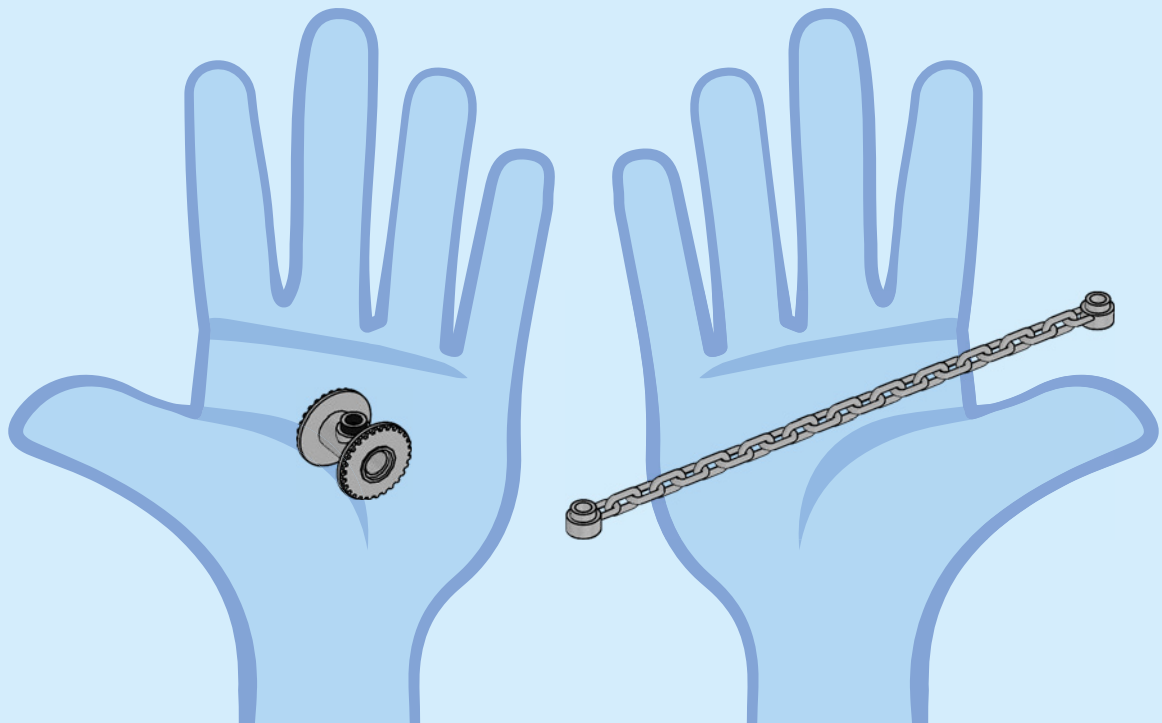


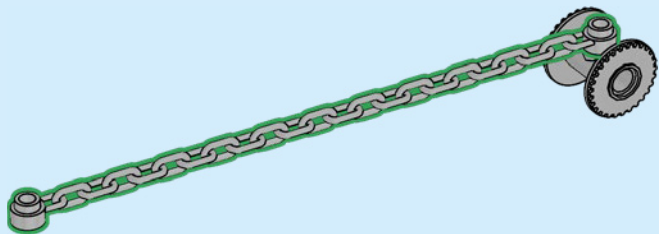


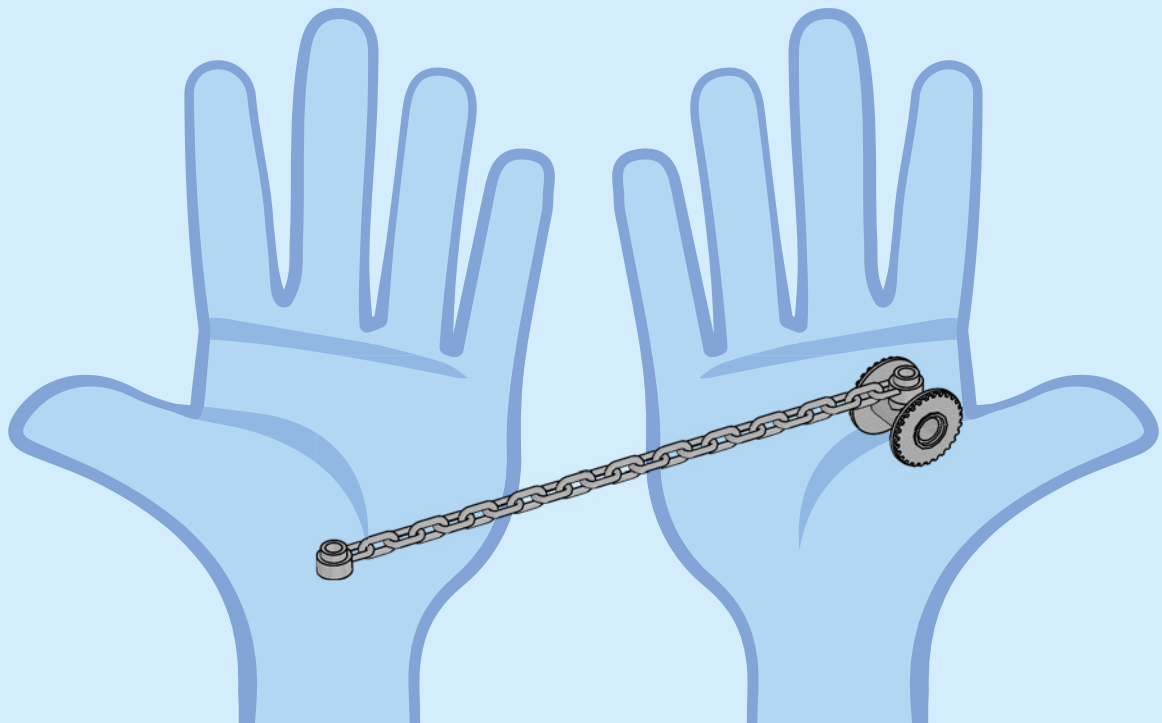


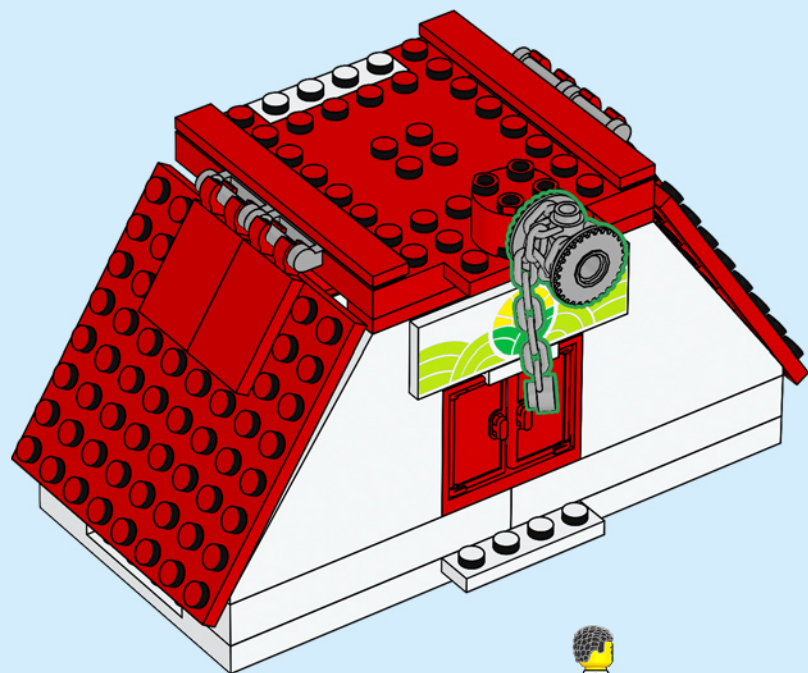


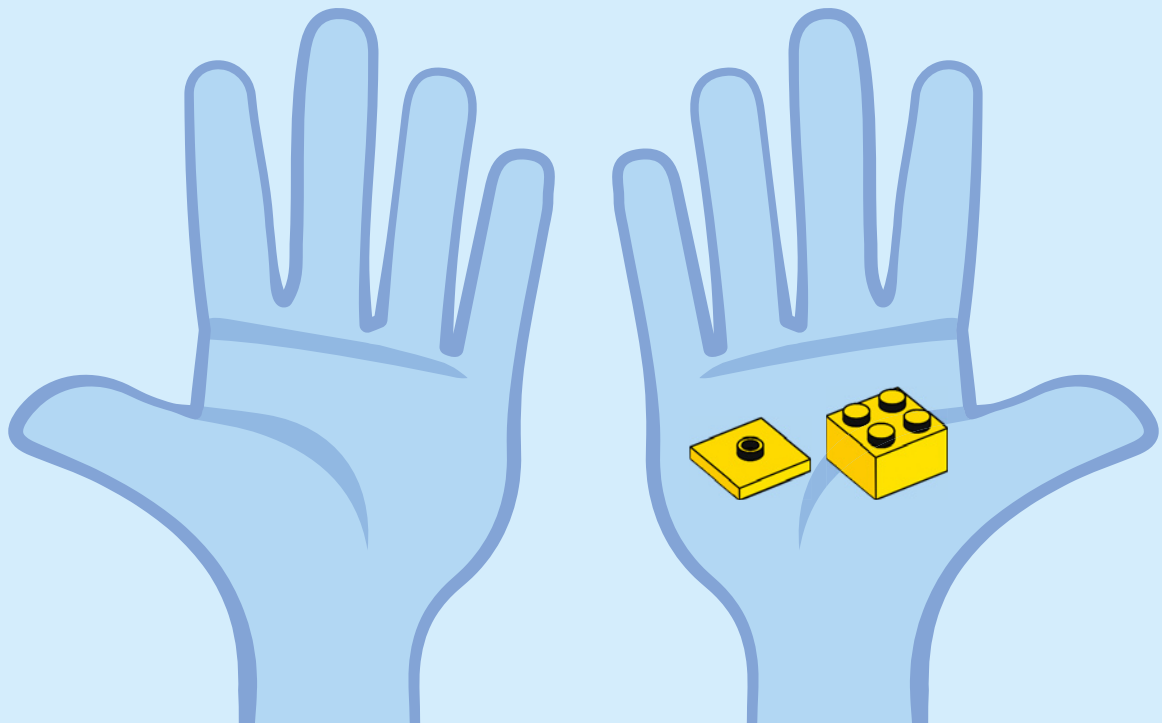




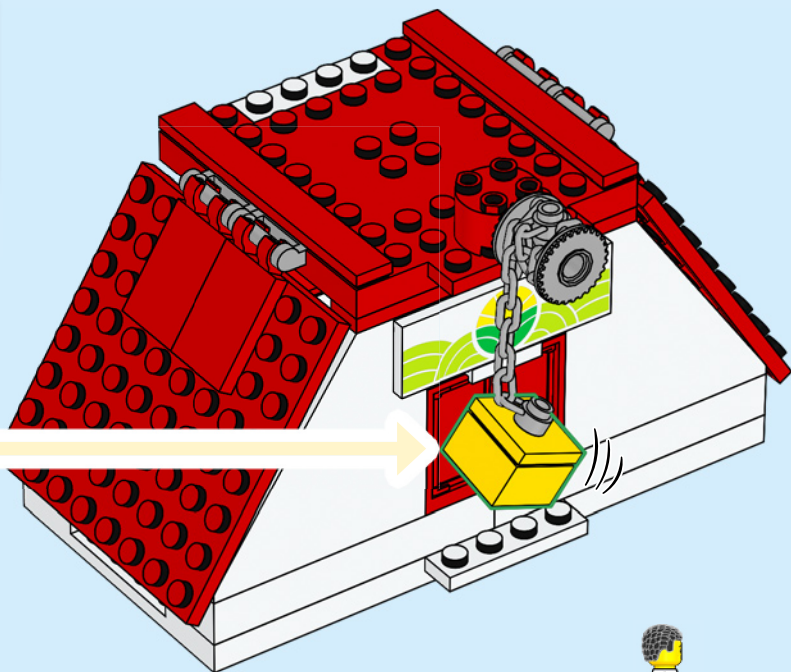
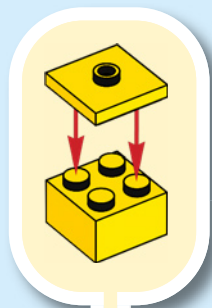


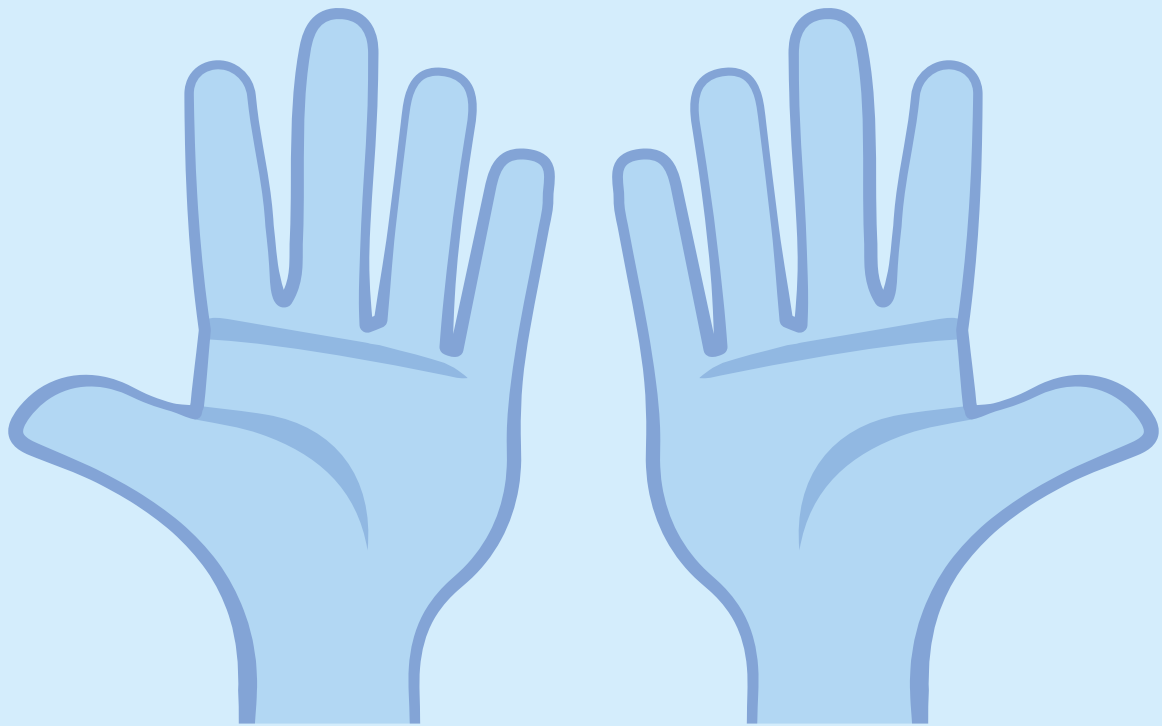


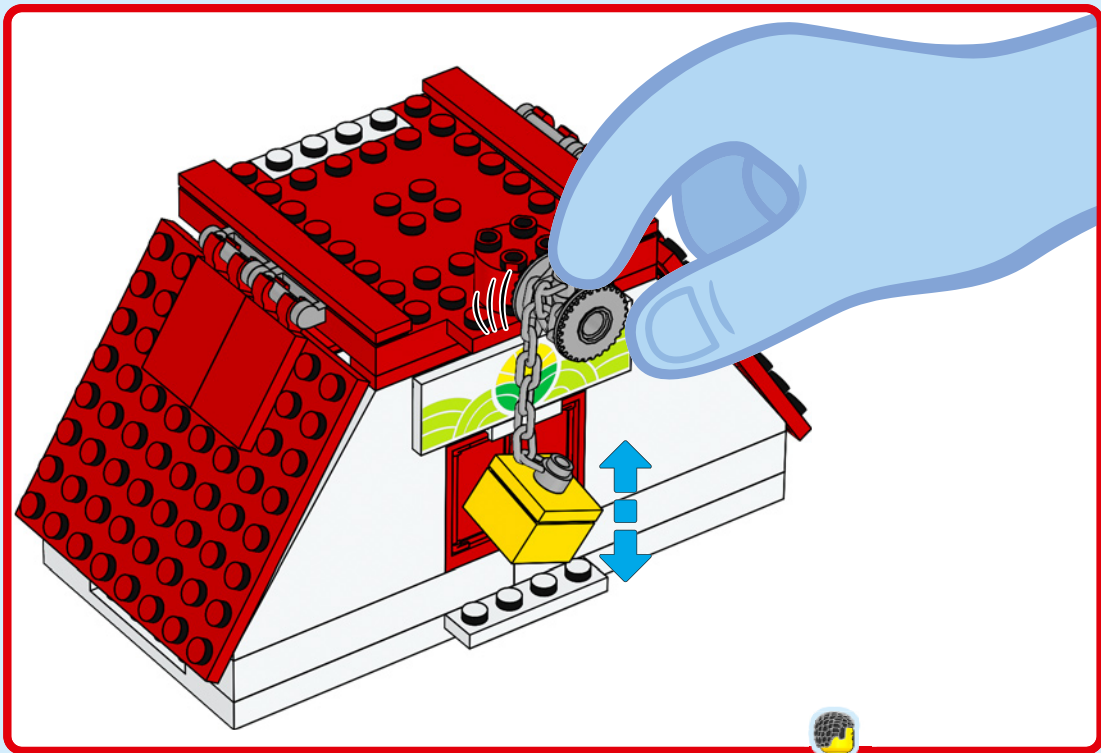


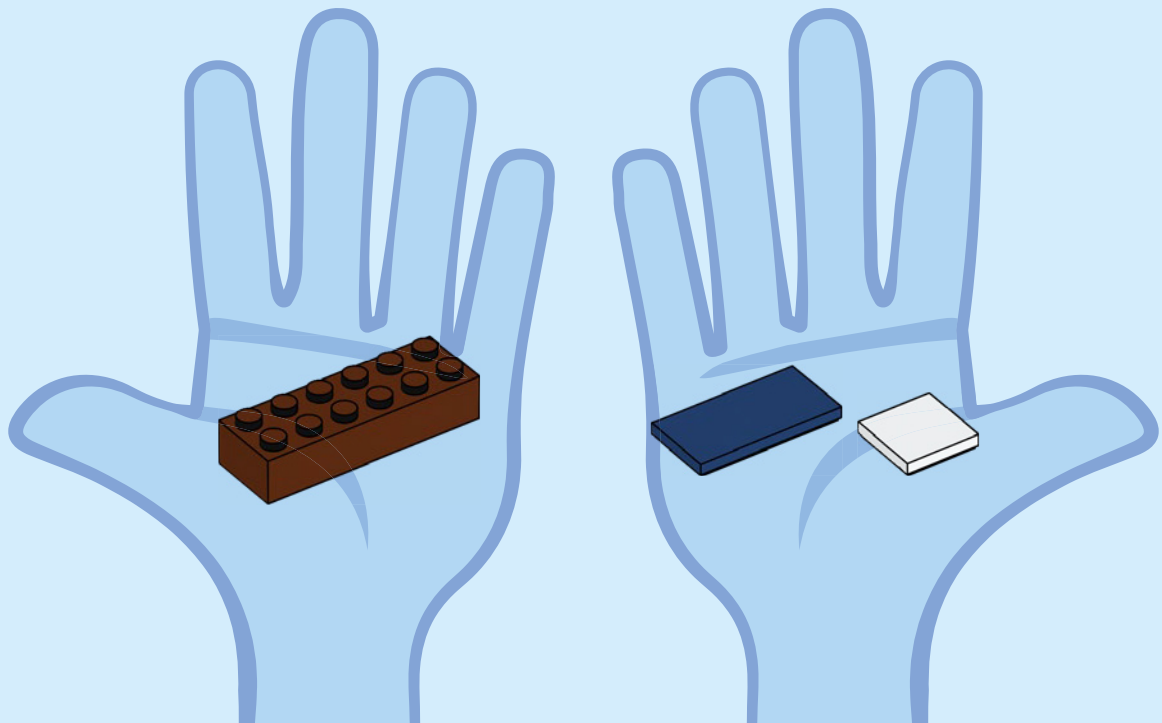


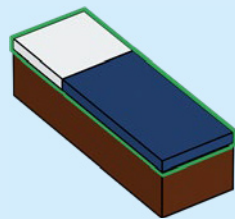
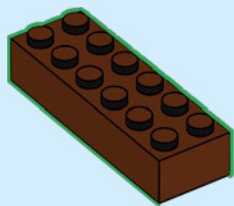


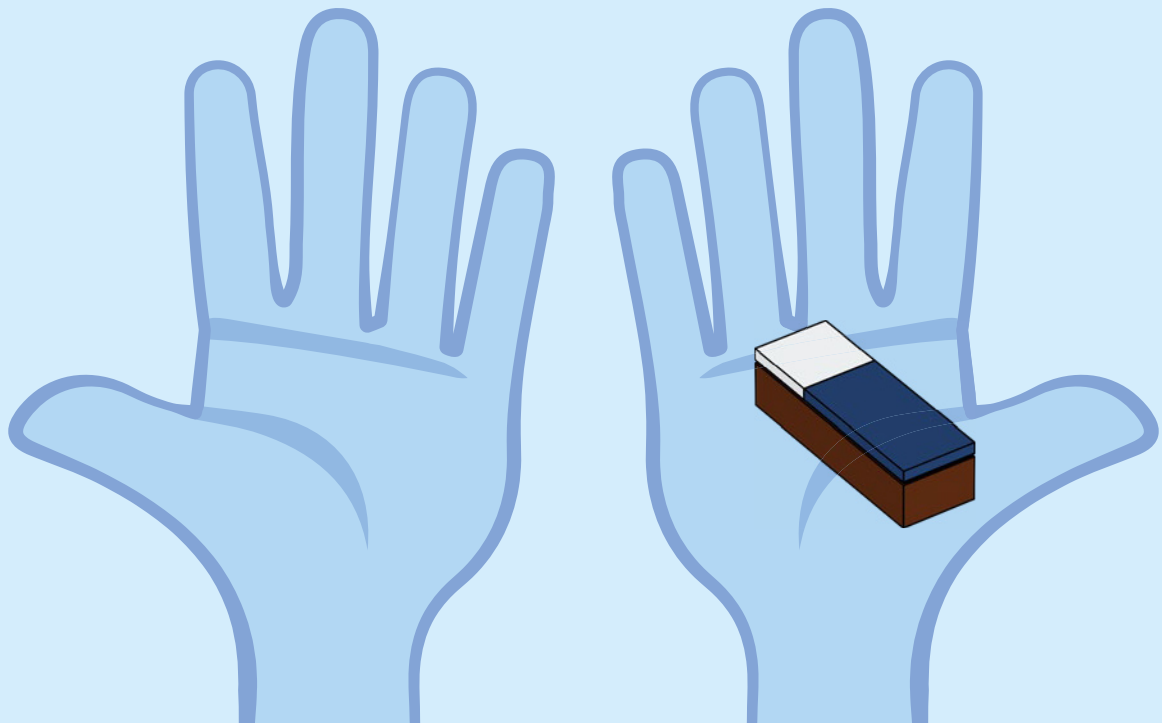


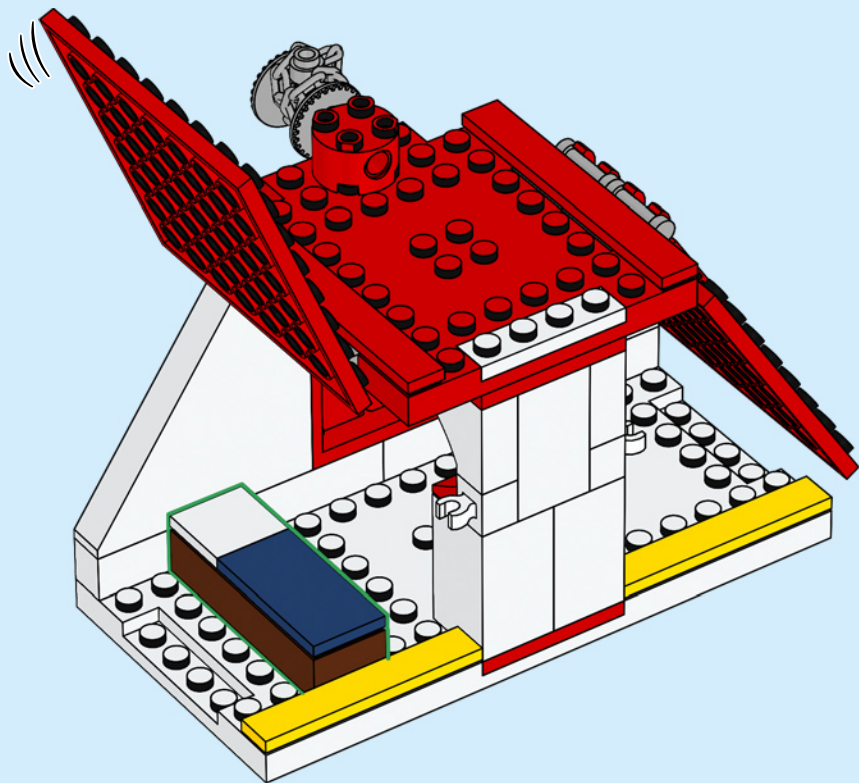






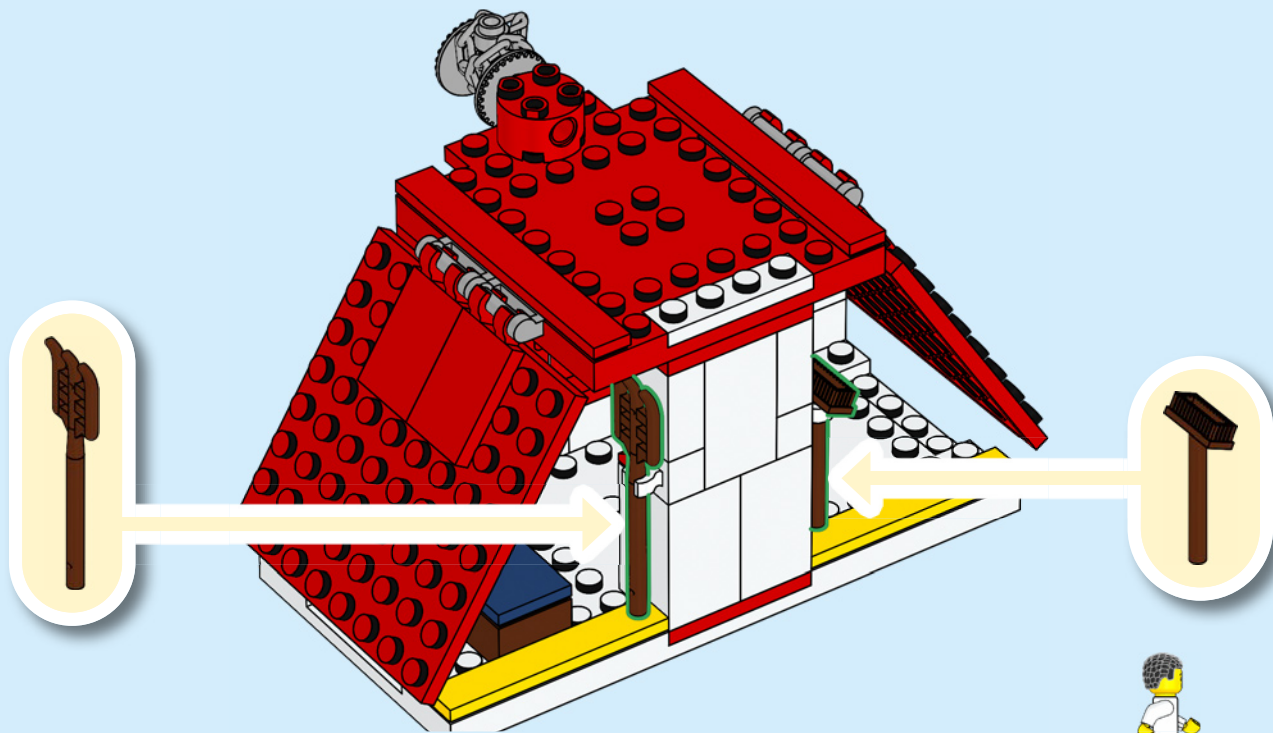


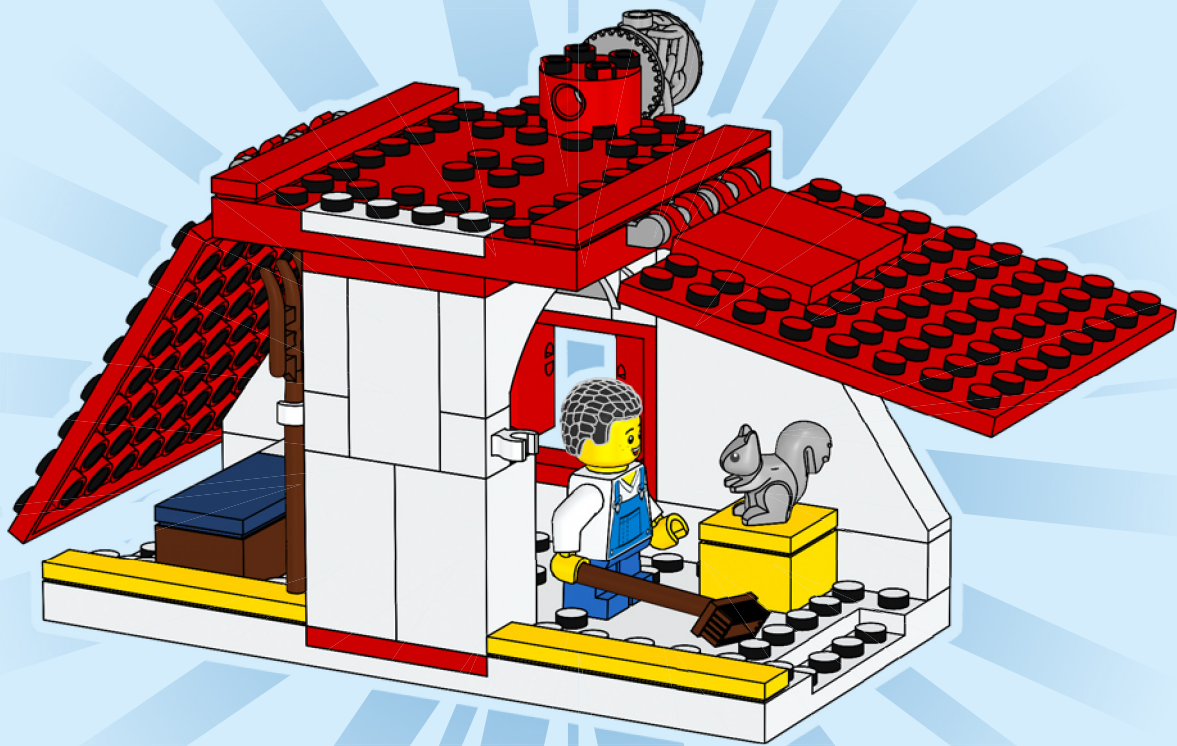
















Rebuild  
the  
world™



LEGO and the LEGO logo are trademarks of the/sont des marques de commerce du/  
son marcas registradas de LEGO Group. ©2022 The LEGO Group. 6415529